

Backcasting Examples

Valentin Todorov

UNIDO

v.todorov@unido.org

Regional Workshop on ISIC Rev.4 implementation
Amman 28.09-1.10.2014

Example 1: micro approach

- In the old classification sector **S** consists of three units **U1**, **U2** and **U3**

	Number of employees	Value added	Gross output
U1	1500	20	100
U2	2400	43	200
U3	2000	50	150
Total sector S	5900	115	450

- In the new classification the new codes of the three units are
 - **U1 → S1,**
 - **U2 → S1 and**
 - **U3 → S2.**
- The micro approach will provide the following aggregations for S1 and S2:

	Number of employees	Value added	Gross output
S1	3900	65	300
S2	2000	50	150

Example 2: Oman Annual industrial survey (manufacturing)

- Annual industrial survey (manufacturing) for 2012
- All establishments with 10 and more employees
- Total of 1228 establishments, double coded in register
- Past data available since 1993 in ISIC Revision 3.1

- Microdata available back to 1993
- ISIC Rev. 3.1
- Backcasting back to 2005 using the macro data
- A tabulation tool for performing the aggregations according to the old or the new coding (in ISIC Rev. 3 or ISIC Rev. 4)

Data entry program (1)

Industrial Statistics Survey - Mozilla Firefox

Industrial Statistics Sur... x

127.0.0.1/?instance=oman-mci-english

Google

4:43 PM Huzaifa Zoomkawala

Serial #	Arabic Name
010100004	بورخ لصناعة المفاتيح الكهربائية
010100006	مطبعة العربي
010100007	الجوده للطباعة والتصميمات الفوتغرافية
010100009	شركة الحمادي للاسماك
010100022	السندسي لصناعة الأدوات المكتبية
010100023	القارات الخمس للرخام ش.م.م
010100024	المصنع العماني للصناعات الخشبية

Page 1 of 63

Add register entries to survey

Update

1.1 Name of Establishment

Arabic Name الجوده للطباعة والتصميمات الفوتغرافية English Name ALJAWDH FOR PRINTING & DIESGH

1.3 Physical location of Establishment

Region Code 0101 Muhafaza MUSCAT Wilayat GREATER MUTTRAH

Town Name MUTTRAH P.O Box No. 3157 Postal Code 112

If Muscat - Way No 2918 Block No 129 Building (House) No 29

1.4 Does establishment operate in industrial estate?

If yes, enter Industrial Estate

1.5 Telephone 24711236 1.6 Mobile 1.7 Fax 24711718

1.8 Email quality1@omantel.net.om

1.9 Destination No. Commercial Industrial

Data entry program (2)

Industrial Statistics Sur... x +

127.0.0.1/?instance=oman-mci-english

1.11 Economic organization of establishment 1. Single establishment

If 3, provide name of head office

Head Office Name

1.12 Paid-up Capital (R.O) Omani Capital

Foreign capital by country

No	Code	Country	Amount
i	<input type="text"/>	<input type="text"/>	<input type="text"/>
ii	<input type="text"/>	<input type="text"/>	<input type="text"/>
iii	<input type="text"/>	<input type="text"/>	<input type="text"/>
iv	<input type="text"/>	<input type="text"/>	<input type="text"/>

1.13 Origin of ownership If Mixed, indicate % foreign

1.14 Form of ownership If Mixed, indicate % government contribution

1.15 Type of legal organization

1.16 Activity of Establishment

Principle Activity Cutting, shaping and finishing of stone

Secondary

1.17 Year started operation

Active

Getting current period: Done

Data entry program (3)

Industrial Statistics Survey - Mozilla Firefox's Tools Help

Industrial Statistics Sur... x

127.0.0.1/?instance=oman-mci-english

Link First Previous 010100023 Search القارات الخمس للرخام ش.م.م. Next Last

2. Employment 3. Wages 4. Purchases (I) 4. Purchases (II) 5. Output 6. Stocks 7. Fixed Assets 8. Miscellaneous Main Statistics

Update

Questionnaire ID A00274

1.18 Reference year (if not 2012) 1.19 Number of operating months during reference year 12

2.1 Number of persons engaged

Employment as at	Omani Male	Omani Female	Non-Omani Male	Non-Omani Female	Total Omani	Total Non-Omani
2.11 30 June 2012	4		64		4	64
2.12 31 December 2012	4		61		4	61

2.2 Number of persons engaged by category

Category	Omani Male	Omani Female	Non-Omani Male	Non-Omani Female	Total Omani	Total Non-Omani
2.21 Working proprietors and partners					0	0
2.22 Unpaid workers					0	0
2.23 Employees: (a) Managerial and professional staff	4		9		4	9
2.24 Employees: (b) Operatives - skilled			30		0	30
2.25 Employees: (c) Operatives - unskilled			22		0	22
2.26 Employees: (d) Other					0	0
Total	4	0	61	0	4	61

2.3 Number of workers leased (if any)

Data entry program (4)

Industrial Statistics Sur... x +

127.0.0.1/?instance=oman-mci-english

Google

B. No. of employees as at end 2012	Total 2.2 - Total 2.21 - Total 2.22	65
C. Gross Output	C(i) + C(ii)	1464280
C(i) Value of goods produced	Total 5.1 + 5.2 + 6.3 (Cls-Opn) + 6.4 (Cls-Opn) + 4.13 + 4.23	1464280
C(ii) Receipts from services rendered		
Industrial Services	Total 5.31	0
Non-industrial Services	Total 5.32 - 4.41 + 6.5 (Cls-Opn)	0
D. Intermediate Consumption	Total i to v	1123223
i. Electricity Consumed	4.14	5245
ii. Water Consumed	4.24	2999
iii. Fuels Consumed	Total 4.3 - 6.1 (Cls-Opn)	2748
iv. Raw materials and supplies consumed	4.42 + Total 4.43 - 6.2 (Cls-Opn)	989652
v. Services consumed		
Industrial Services	Total 4.51	0
Non-industrial Services	Total 4.52 + 3.3	122579
E. Value Added - Basic Prices (V.A bp)	C-D To check: should normally be positive	341057
Please check V.A/G.O (%)	E/C * 100	23
F. Compensation of Employees (C.E)	Total 3.1	161152
a. C.E/V.A (%)	F/E * 100	47
b. C.E per employee per month	F/(B*12)	206
G. Other Taxes on Production	4.65	7998
H. Subsidies	5.333	0
I. Gross Operating Surplus	E-F-G+H	171907

Getting current period: Done

Aggregation program (1)

Industrial Statistics Sur... x

127.0.0.1/tabulation.html?instance=oman-mci-english

Year: 2012 Period: 1 - Persons engaged (tot 2.2) by activity (2 digit) and year started operation

Year: 2012 Period: 1 - Persons engaged (tot 2.2) by activity (3 digit) and form of ownership

Year: 2012 Period: 1 - Persons engaged (tot 2.2) by activity (3 digit) and geographical region

Classification: ISIC 3 digit, muhafazat

Values: Total Persons Engaged (Tot 2.2)

Generated on: 2014-09-24

Save Generate

	MUSCAT	SOUTH AL BATINA	AL WESTA	NORTH ALBATINA	MUSANDAM	AL DAHRA	AL BURAIMI	AL DAKHILIYAH	SOUTH AL SHARQIA	NORTH AL SHARQIA	DOFAR
0				93					18		
014									21		
081		23		33							
101											652
102 581			23						17	50	35
103 326	362			14			49				
104 564											102
105 99				239							
106 398											210
107 1628	35			1488	22	37	61	21	40	104	924
108 22											162
110 938	84		37	9	10	40	91	322	30	106	166
131 167	29										
139 407				44			10				
141 683	28										
152 149											
162 530				94		19			21	25	
170 298				51							14
181 1168				80				29	16		96
182 14											
191 8											
192 31				134		14	44		23	7	35

Aggregation program (2)

Industrial Statistics Sur... x

127.0.0.1/tabulation.html?instance=oman-mci-english

Year: 2012 Period: 1 - Persons engaged (tot 2.2) by activity (4 digit) and form of ownership
Year: 2012 Period: 1 - Persons engaged (tot 2.2) by activity (4 digit) and employment size

Classification: Employment Size, ISIC 4 digit
Values: Total Persons Engaged (Tot 2.2)
Generated on: 2014-09-24

Save Generate

	A <=9	B 10-19	C 20-49	D 50-99	E 100-499	F >= 500
0		42	69			
0146		21				
0810			56			
1010						652
1020 7		64	213	73	349	
1030		31	32		688	
1040					102	564
1050				99	239	
1061					418	
1062					190	
1071 60		104	379		1203	521
1073					262	
1074					126	
1075			46			
1079		24	127		914	594
1080			22	162		
1104 42		122	138	164	1367	
1311					167	
1313			29			
1392		10	25	96	133	
1399			44	153		
1410			28		683	
1520				149		

Example 3: Manufacturing data from the UNIDO database INDSTAT

1. INDSTAT: Business structure statistics for manufacturing

1. Number of establishments
2. Number of employees
3. Wages and salaries
4. Gross output
5. Value added
6. Gross fixed capital formation
7. Share of female employees
8. Index numbers of industrial production

2. MINSTAT: Mining and utilities (except 6-8)

- <http://stat.unido.org>
- Data available for 169 countries (different coverage)
- Currently 58 countries report in ISIC Revision 4
- **Many** EU countries switched to ISIC Revision 4 in 2008
- **Not many** countries have reported backcasted time series



Selected Dataset: INDSTAT 4 2014, ISIC Revision 4:

Change Selection

Change Layout

Show Graph

Download data

State of Palestine ▾

Value added ▾

☒ Units ☐ Thousands ☐ Millions ☐ Billions

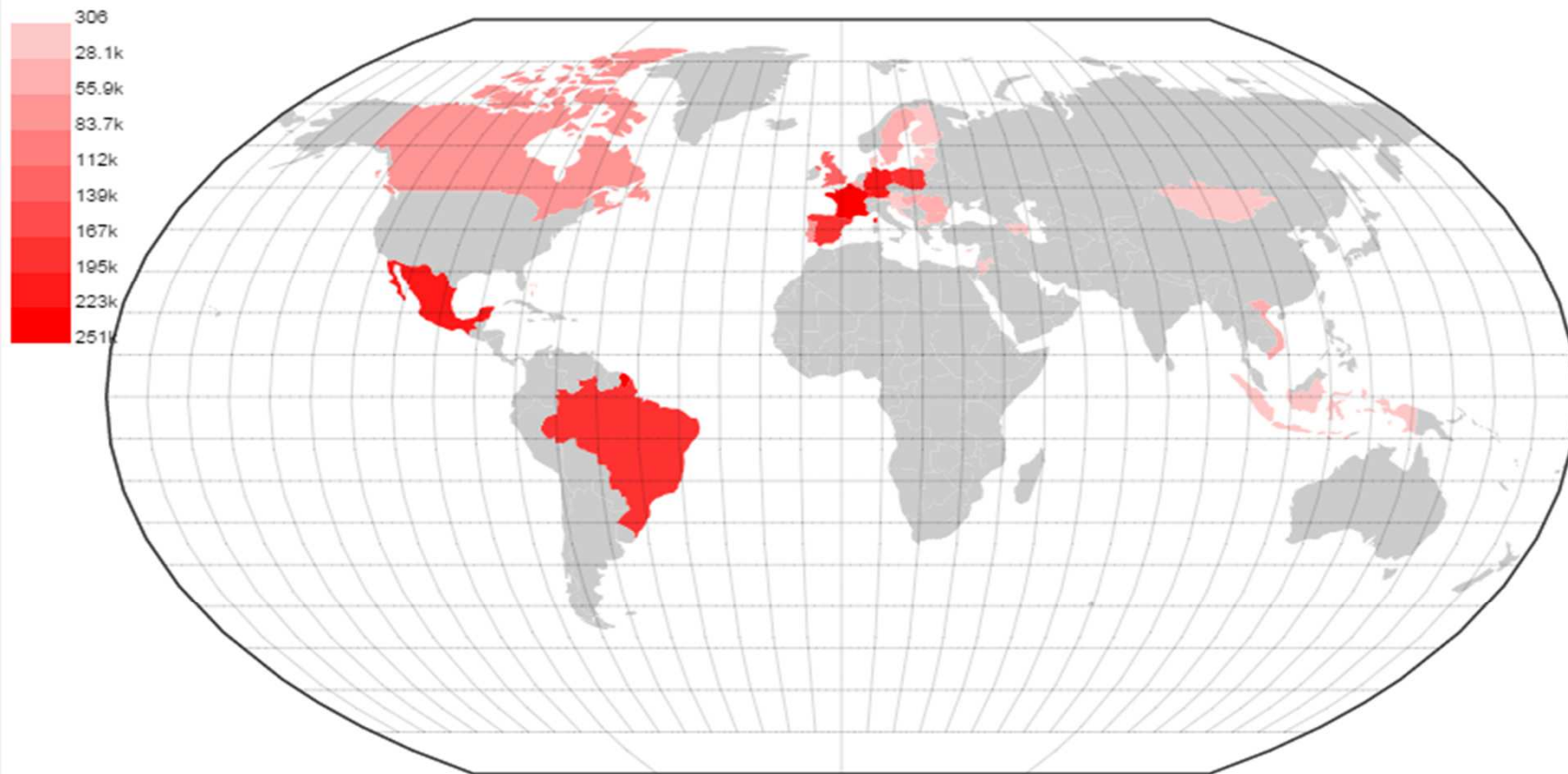
☒ National Currency ☐ USD

Click on [i](#) to view additional information.

Amounts are in current national currency (US Dollars)

	2010 i	2011 i
1010 Processing/preserving of meat	259881175 (1010A i)	183607500 (1010A i)
1020 Processing/preserving of fish, etc.	... (1010A i)	... (1010A i)
1030 Processing/preserving of fruit,vegetables	... (1010A i)	... (1010A i)
1040 Vegetable and animal oils and fats	... (1010A i)	... (1010A i)
1050 Dairy products	... (1010A i)	... (1010A i)
106 Grain mill products,starches and starch p	... (1010A i)	... (1010A i)

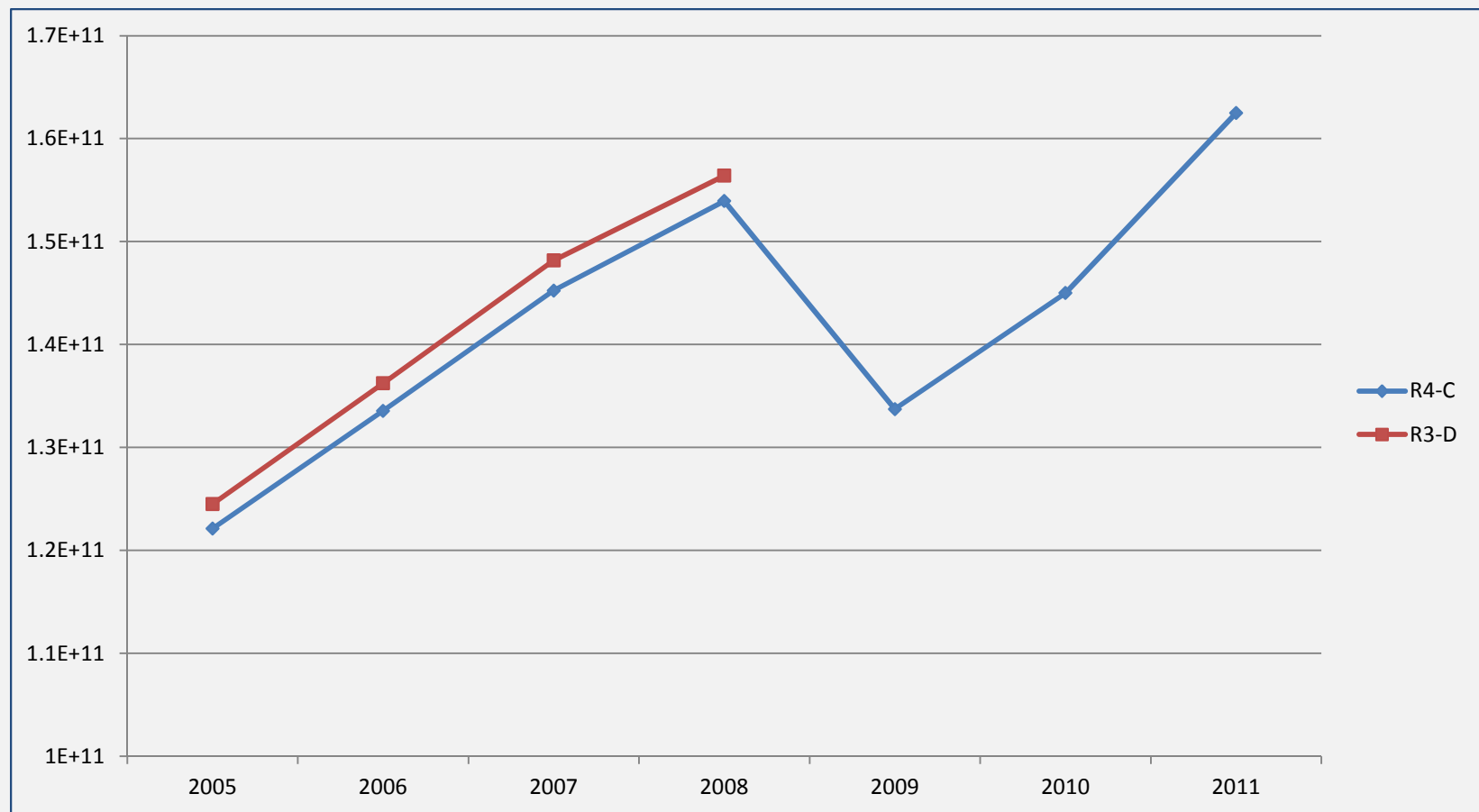
Visualizing UNIDO Statistics



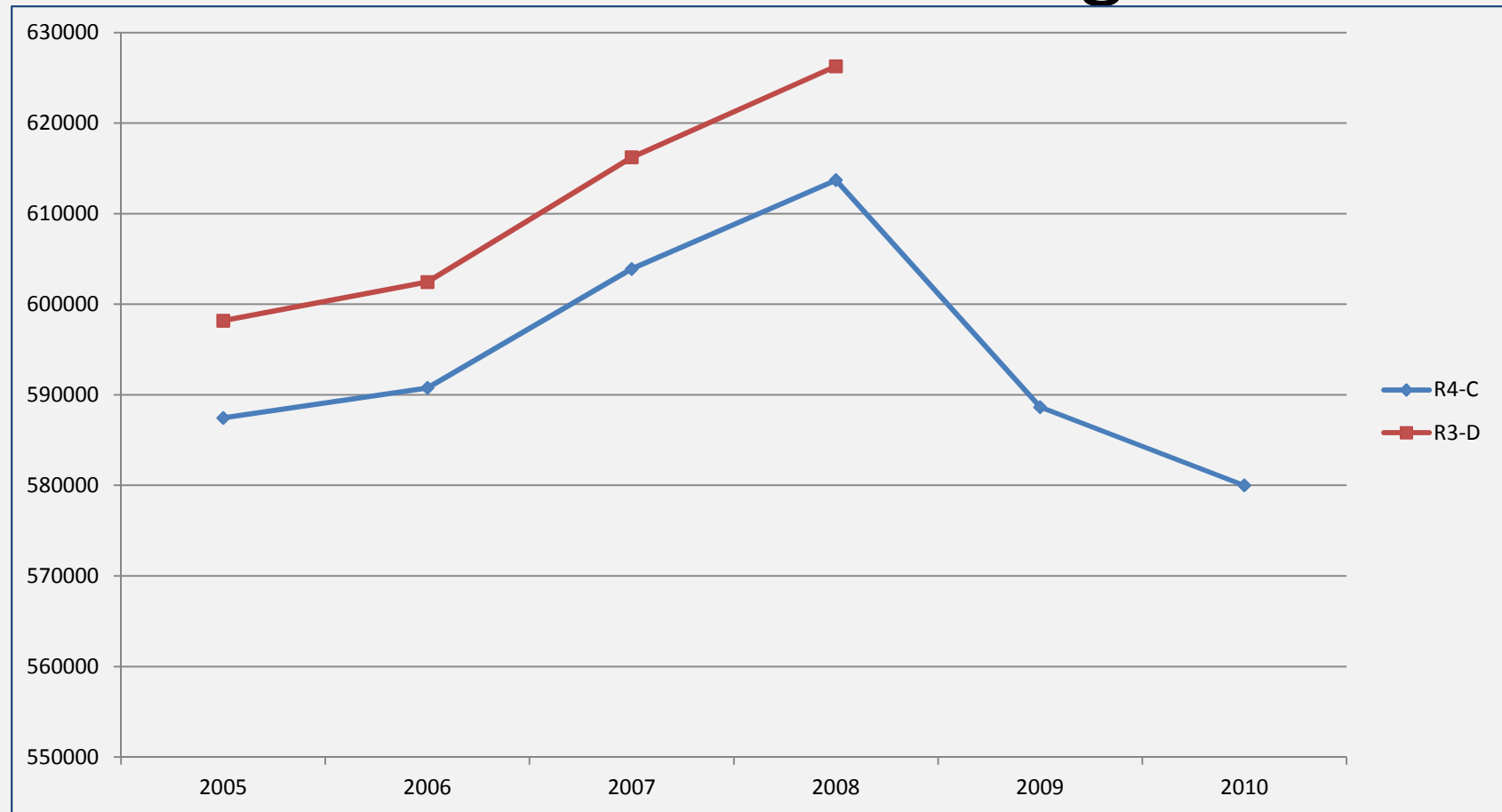
Year: 2011; Variable: Establishments; ISIC - 4 digit: Total manufacturing

unido.org

Austria: Gross Output Total Manufacturing

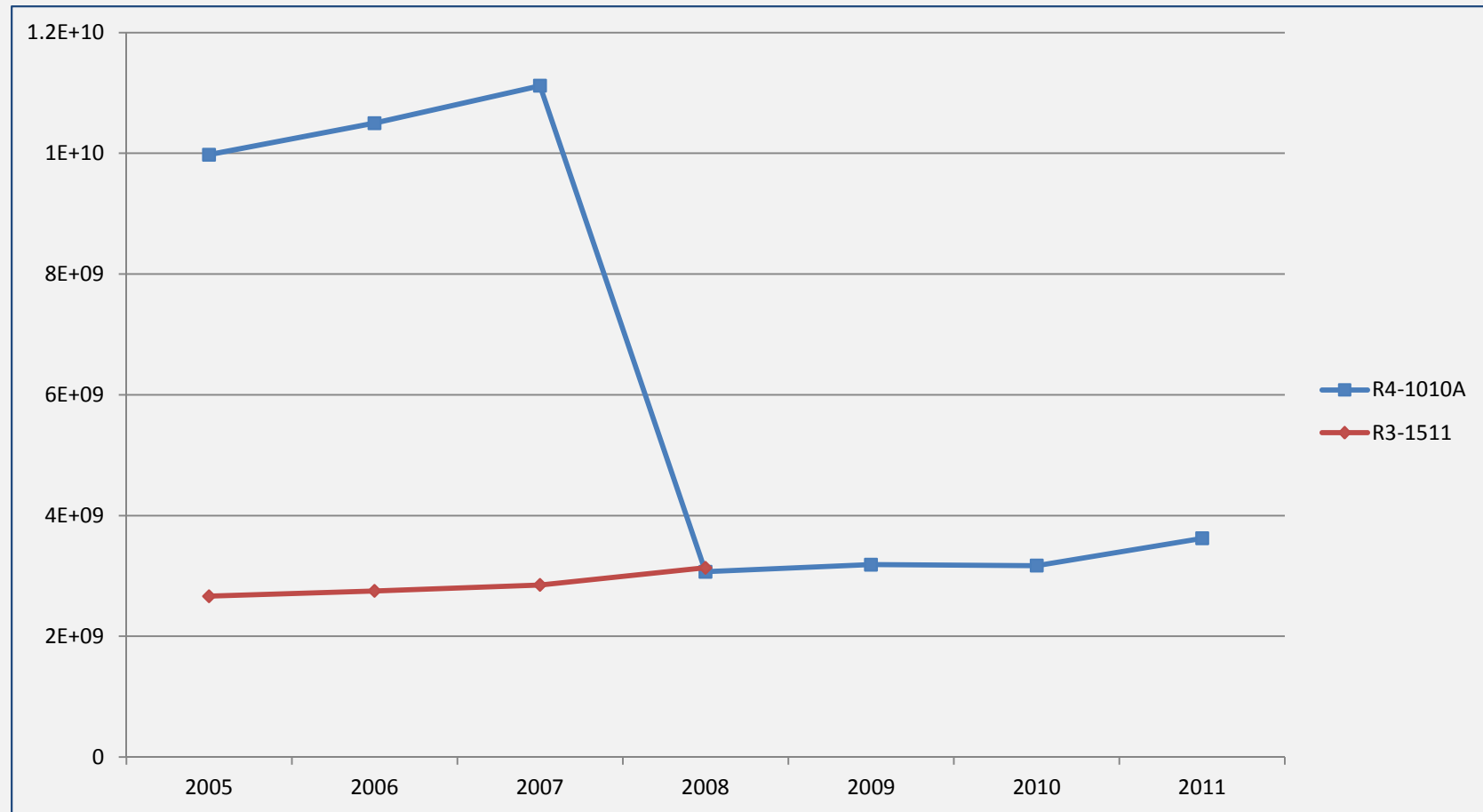


Austria: Number of employees Total Manufacturing



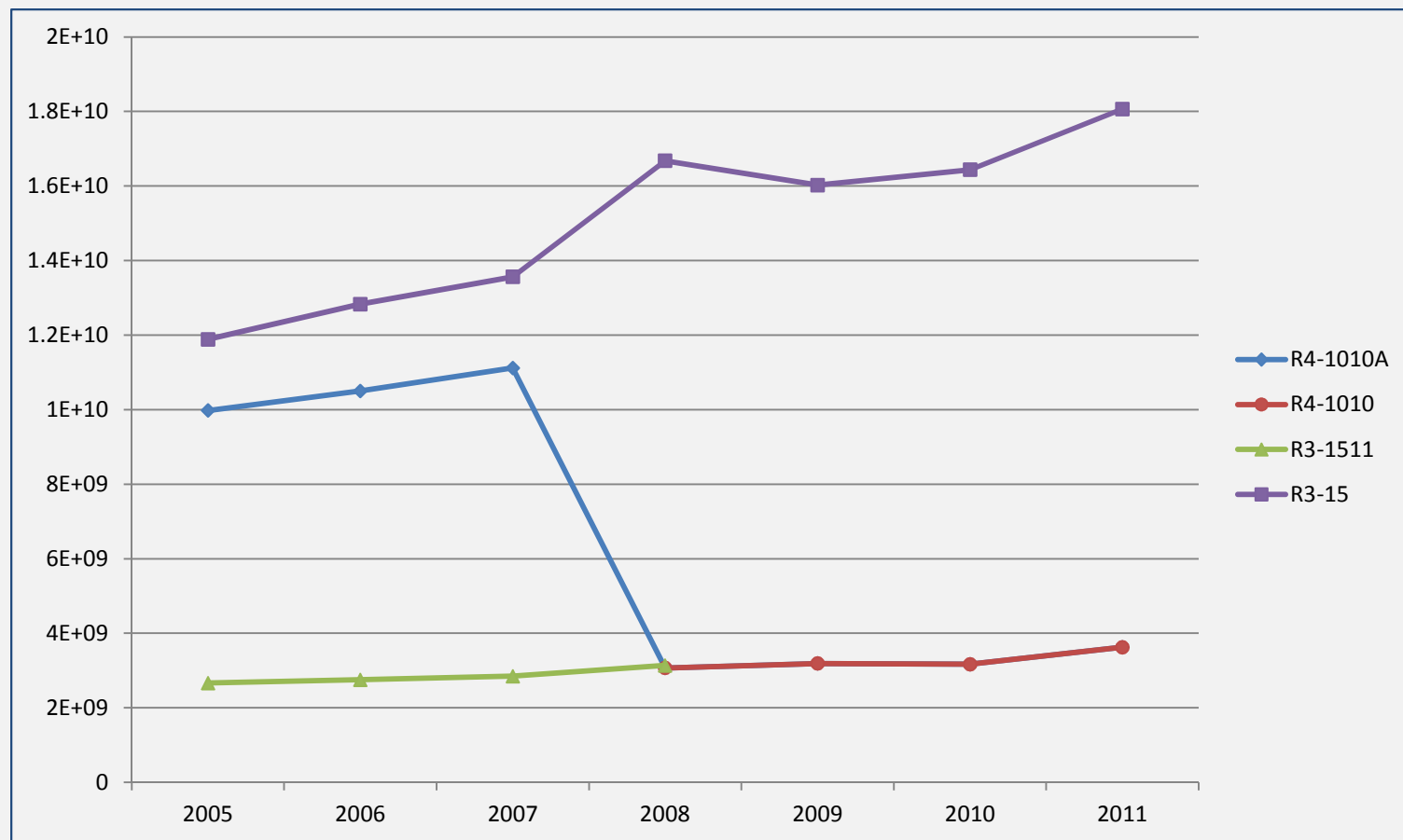
Austria: Gross Output

1010 - Processing and preserving of meat



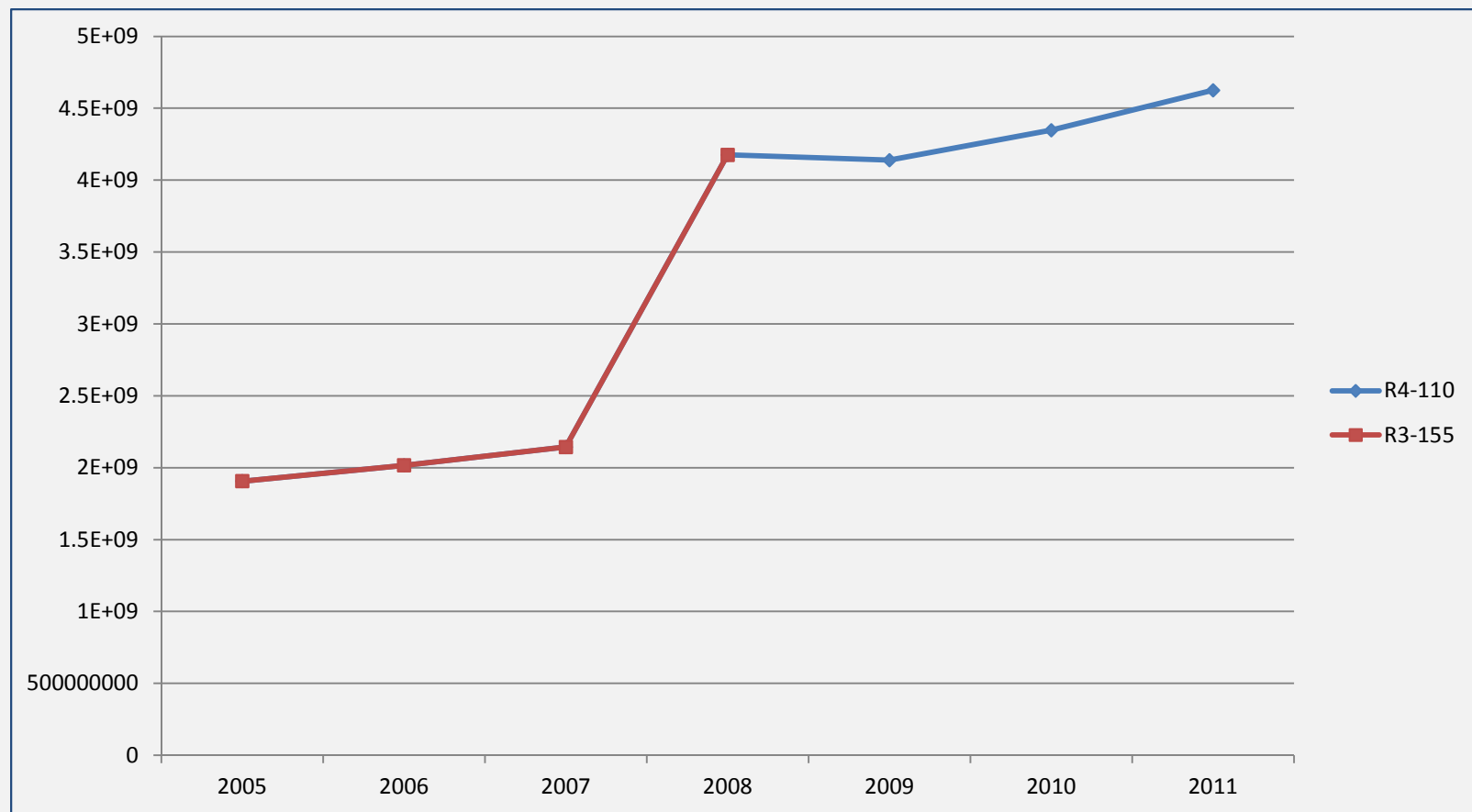
Austria: Gross Output

1010 - Processing and preserving of meat



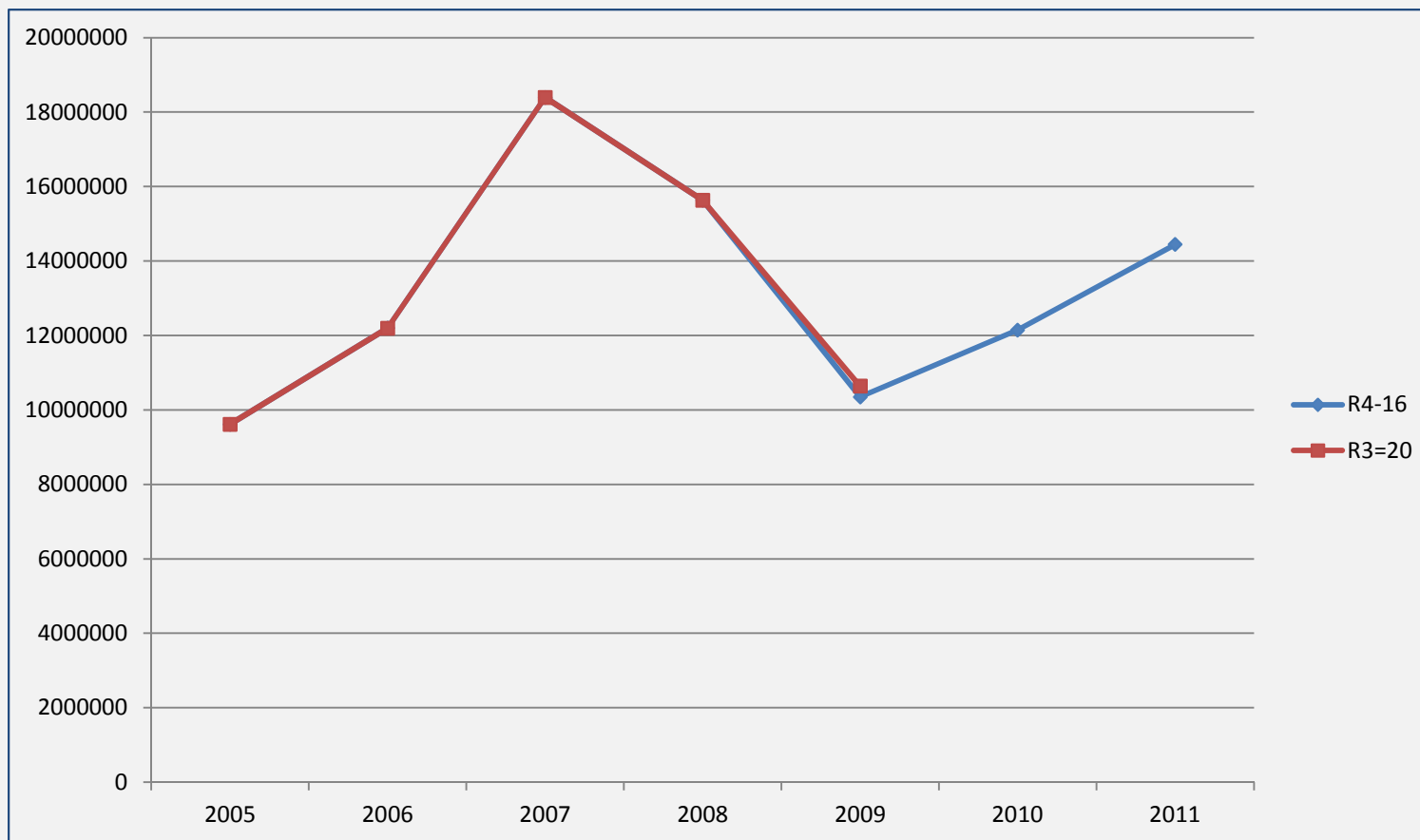
Austria: Gross Output

110 - Beverages



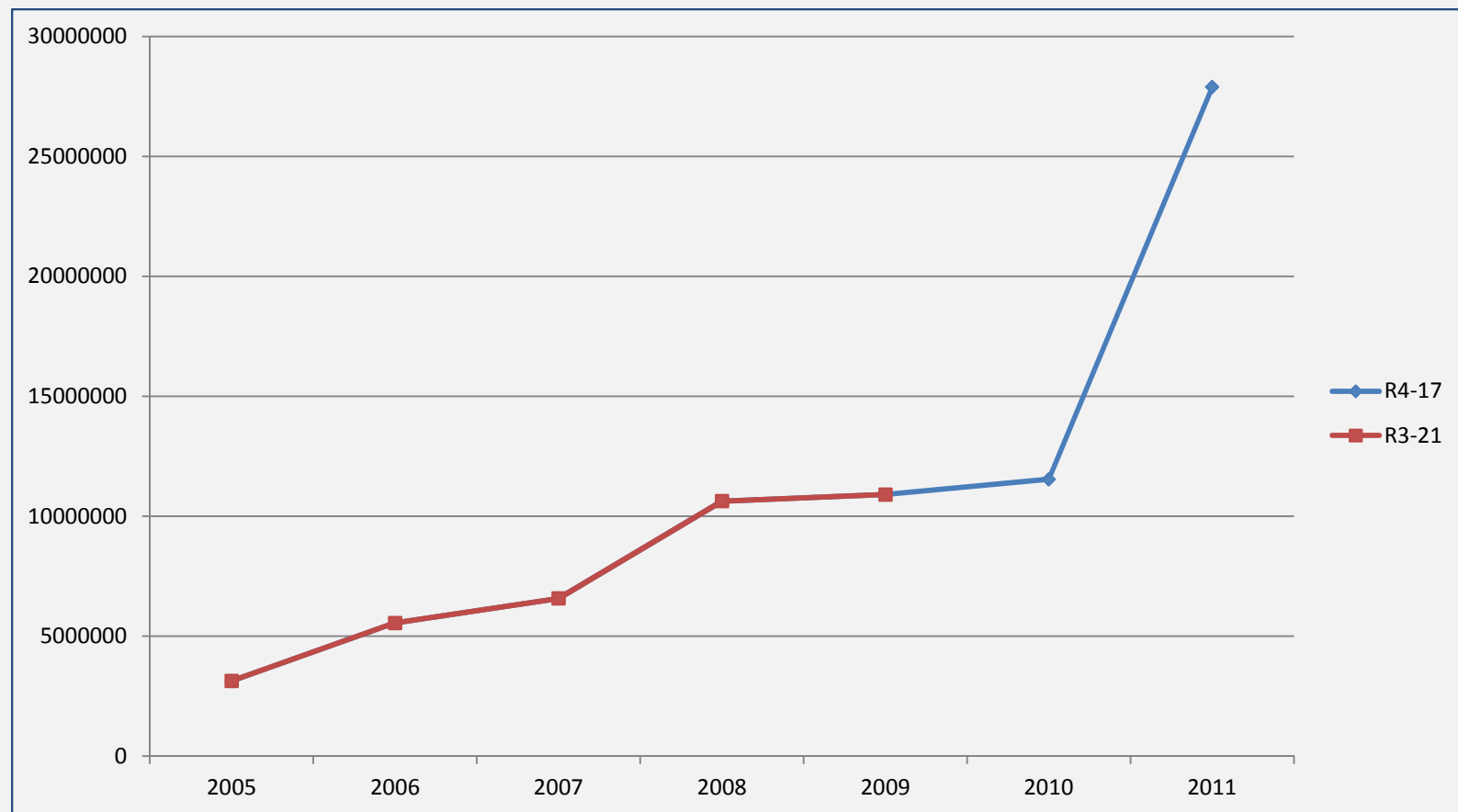
Azerbaijan: Gross Output

16 Wood products



Azerbaijan: Gross Output

17 Paper and Paper products



Azerbaijan: Gross Output

R4: 18 Printing

R3: 22 Publishing and printing

