



UN-ESCWA

UNITED NATIONS - Economic and Social Commission for Western Asia

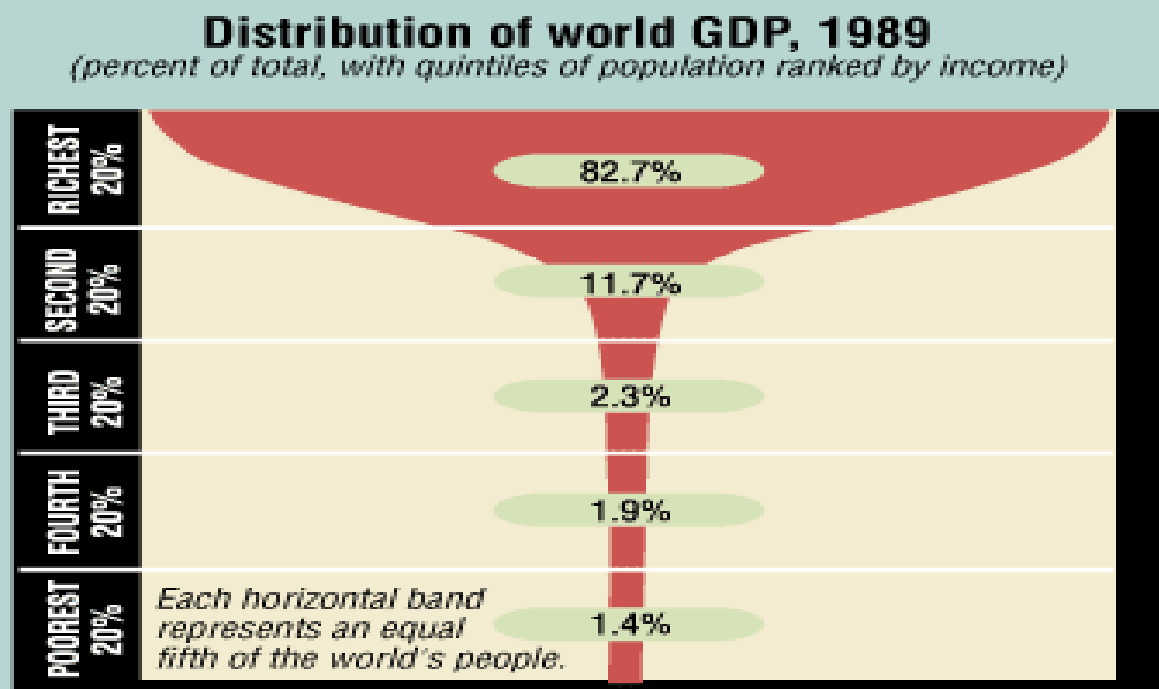


Promoting the “S” in ESCWA

Fred T. Neto
Chief, Social Development Division



Global Inequality in 1989/1990 – HDR 2002



Source: United Nations Development Program, 1992, Human Development Report 1992 (New York: Oxford University Press for the United Nations Development Program).

Global Inequality in 2005 – RWSS-2005

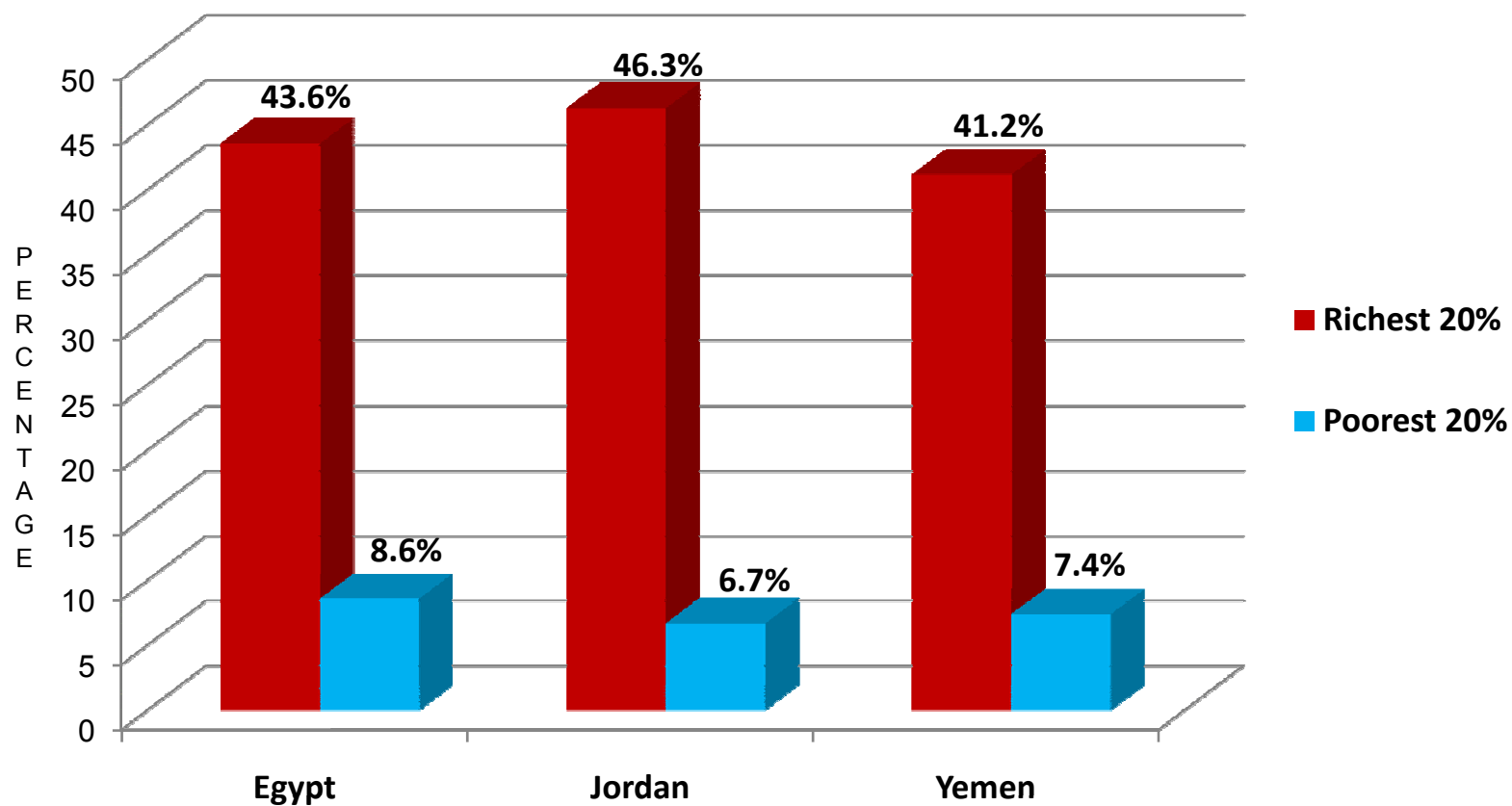


- **Despite considerable economic growth in many regions, the world is more unequal than it was 10 years ago: inequalities between and within countries have accompanied globalization.**
- **Inequalities in many areas, including health, education, gender and employment: youth are 2-3 times more likely to be unemployed than adults and currently make up almost 50% of the world's unemployed.**
- **80% of the world's domestic product belongs to 1 billion people living mostly in the developed world, while the remaining 20% is shared by the other 5 billion.**

Inequality in Western Asia



SHARE OF NATIONAL INCOME IN SELECTED ESCWA COUNTRIES

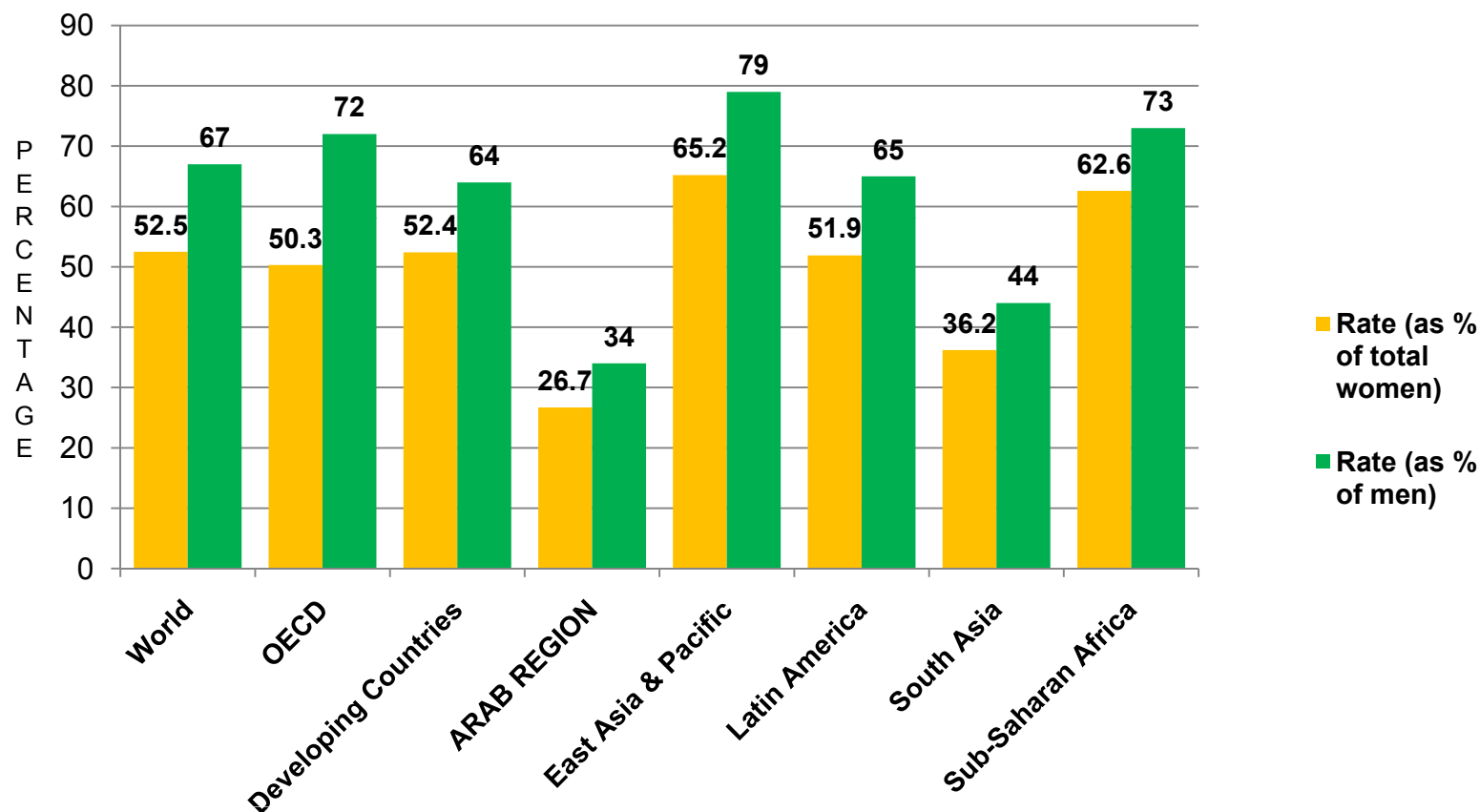


Source: Arab Human Development Report 2009

Gender Inequality in Western Asia



Economic Activity by Females aged 15 and older, 2005



Source: Arab Human Development Report 2009

Global Economic Crisis & MDGs (2009)



- MDG Report 2009 shows remarkable advances in poverty reduction, education and child mortality in several regions, before the economic landscape changed so radically in 2008.

► But...

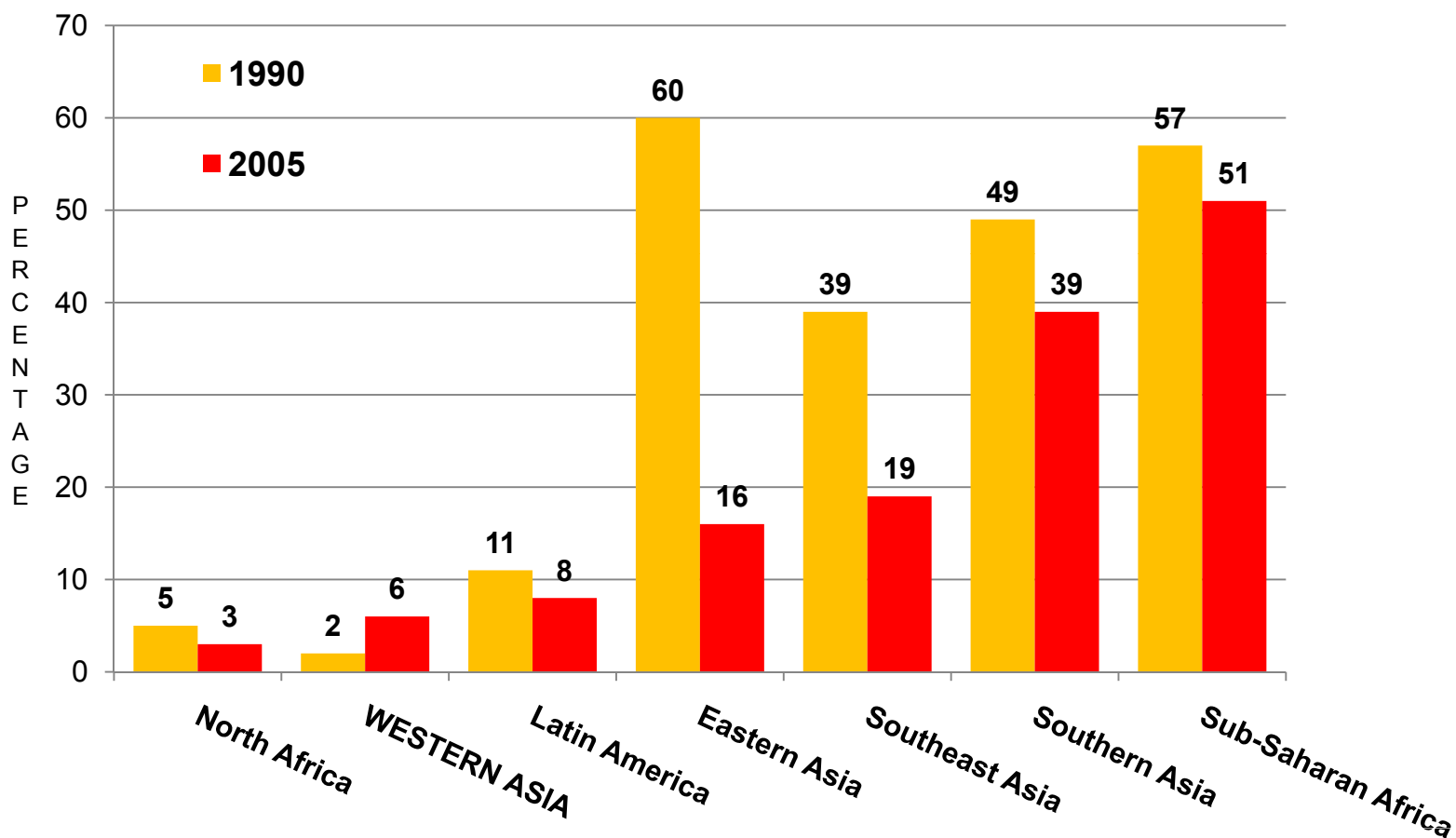
- *“Today, we face a global economic crisis ... (which) could prevent us from keeping our promises, plunging millions more into poverty and posing a risk of social and political unrest.”*
- *“Economic hardship has pushed tens of millions of people into vulnerable employment ... (people who) do not earn enough for themselves and their families to rise above the poverty line.”*

Ban Ki-moon, Secretary-General, United Nations

Poverty in Developing Country Regions



Proportion of people living on less than USD 1.25 a day, 1990-2005

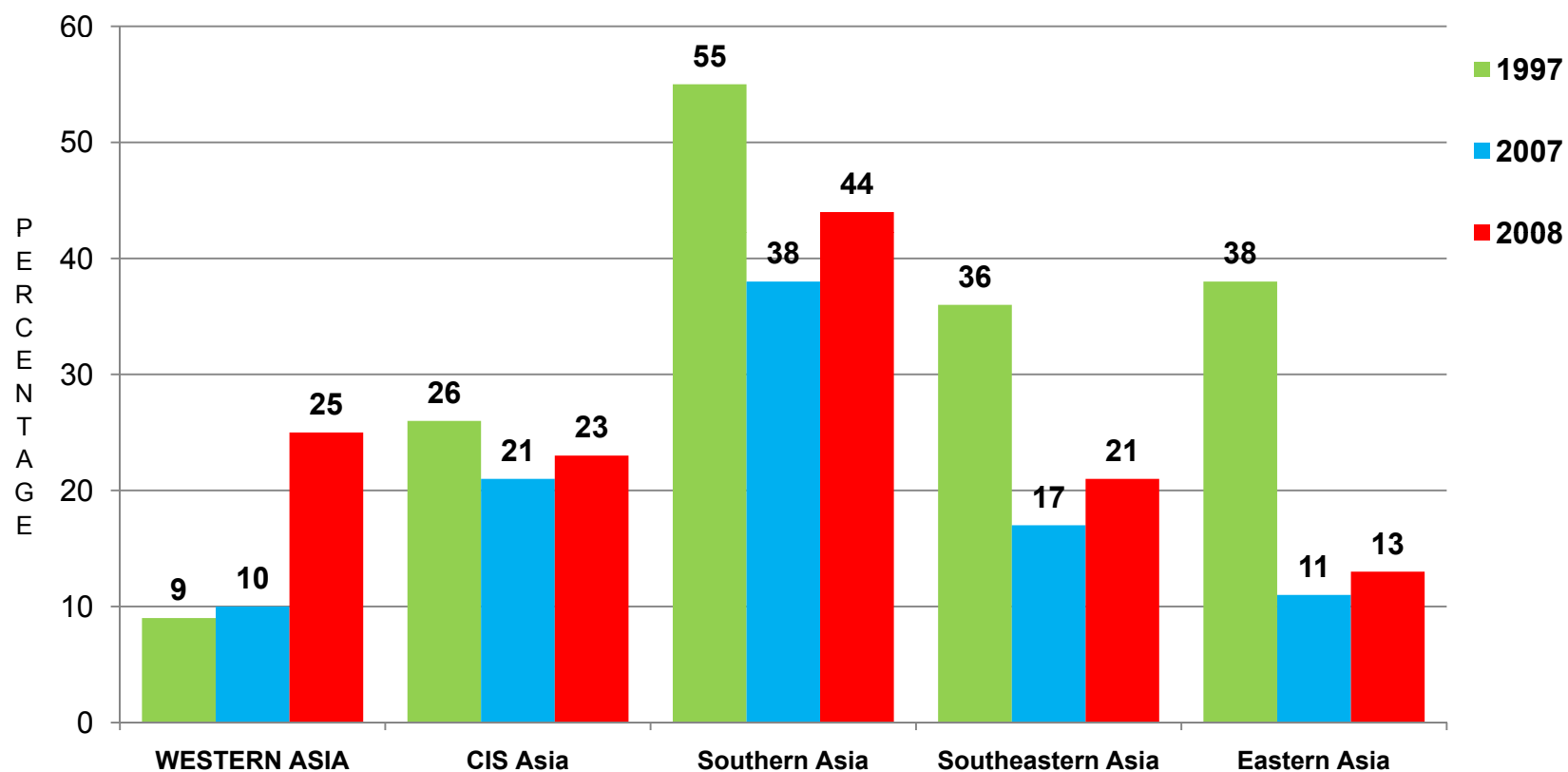


Source: MDGs Report 2009

The Working Poor in Asia

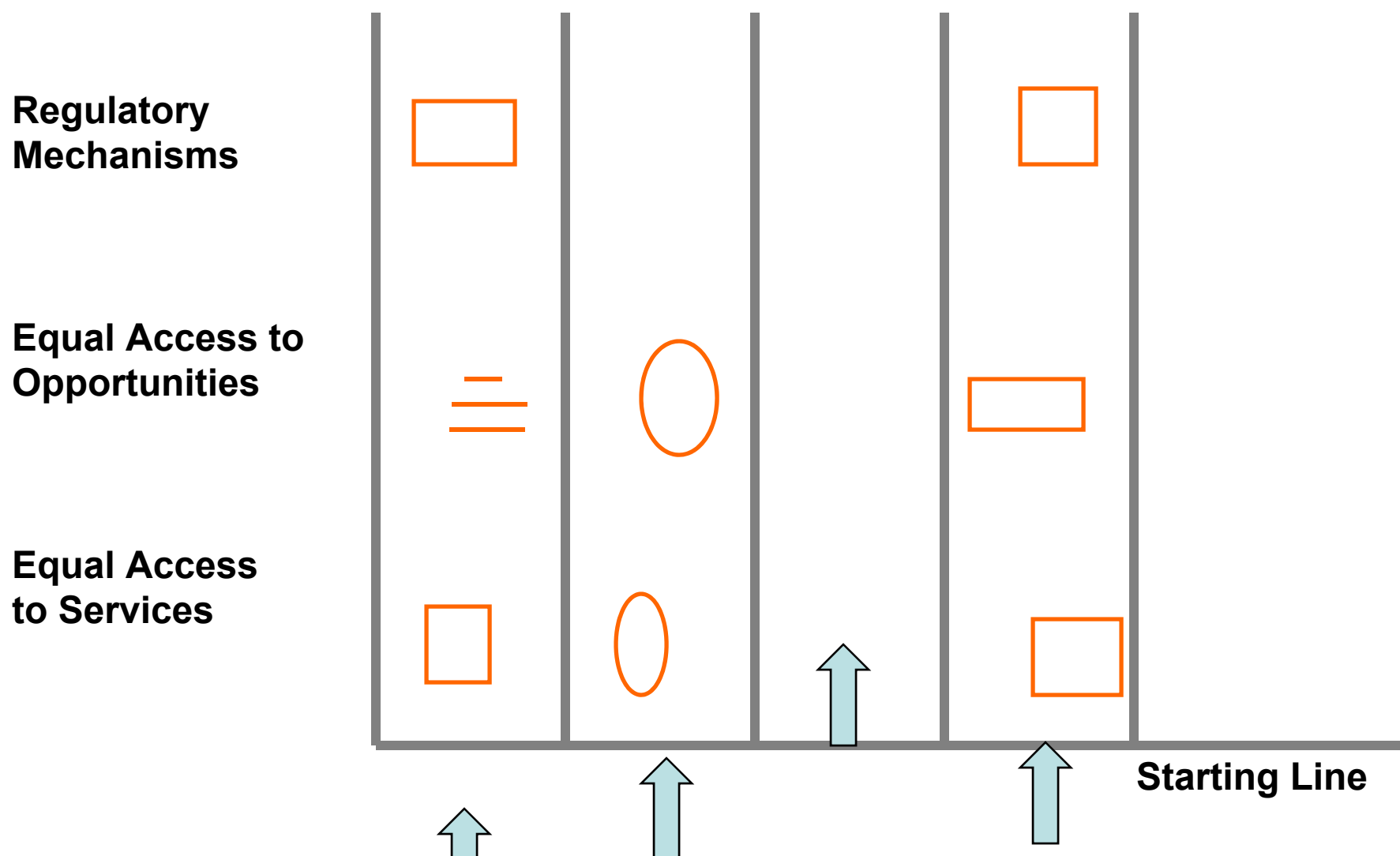


Proportion of employed people living below USD 1.25 a day



Source: MDGs Report 2009

The Right to A Fair Race



A Paradigm Shift



| <i>1980s Development Policies</i> | <i>New Paradigm</i> |
|---|---|
| × Economic growth through deregulation, free markets and minimalist government | ➤ Growth and equity through active promotion of national development: integrated social and economic development |
| × Fiscal policies based on minimal direct taxation | ➤ Taxation for development and redistributive purposes |
| × Anti-inflationary measures as core monetary policy | ➤ Employment-generating growth as a priority: tolerance to limited inflation |
| × Residual social policies based on charity and safety nets | ➤ Importance of integrated social policies for development, equity and nation building |
| × Selective participatory processes | ➤ National coalitions, social dialogue and social contract |

Defining Social Policy



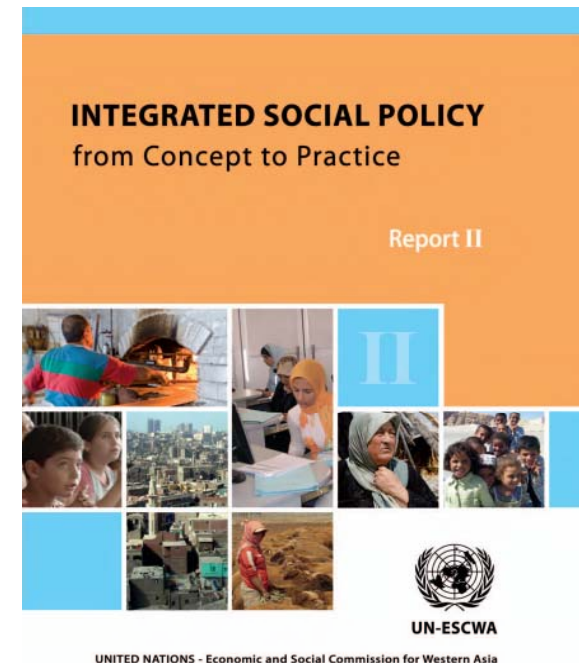
- ▶ State interventions to improve human welfare, change social relations and expand opportunities for people throughout the development process.
- ▶ It can simultaneously address aspects of production, reproduction, protection and redistribution, as well as equity, inclusion and rights.



The Integrated Social Policy Approach



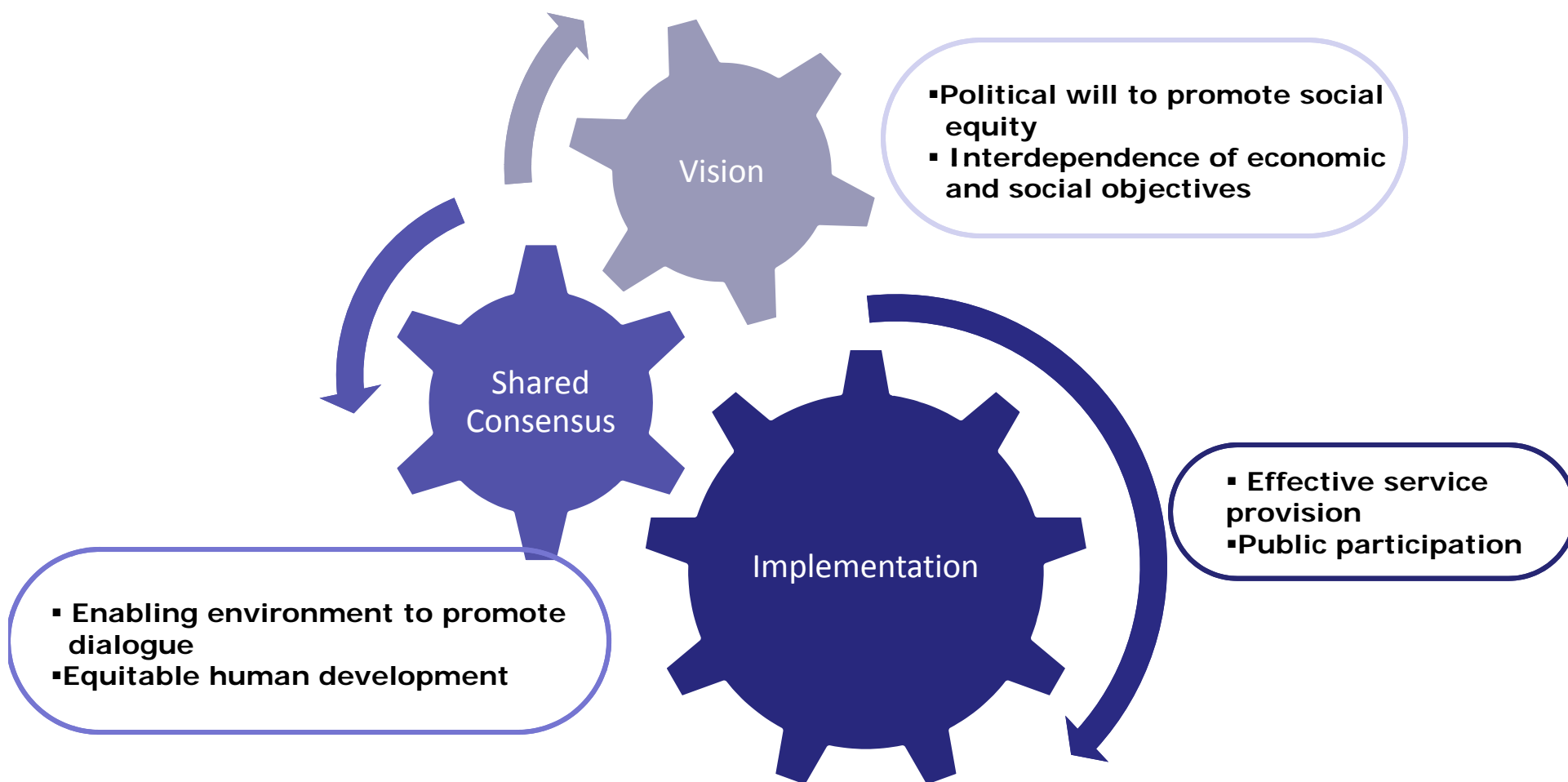
An integrated social policy approach is one in which social issues are not viewed as residual or secondary to economic processes, but where public policy is informed at every stage by social equity and human rights concerns.



A Framework for Social Policy



The Social Contract



THANK YOU