

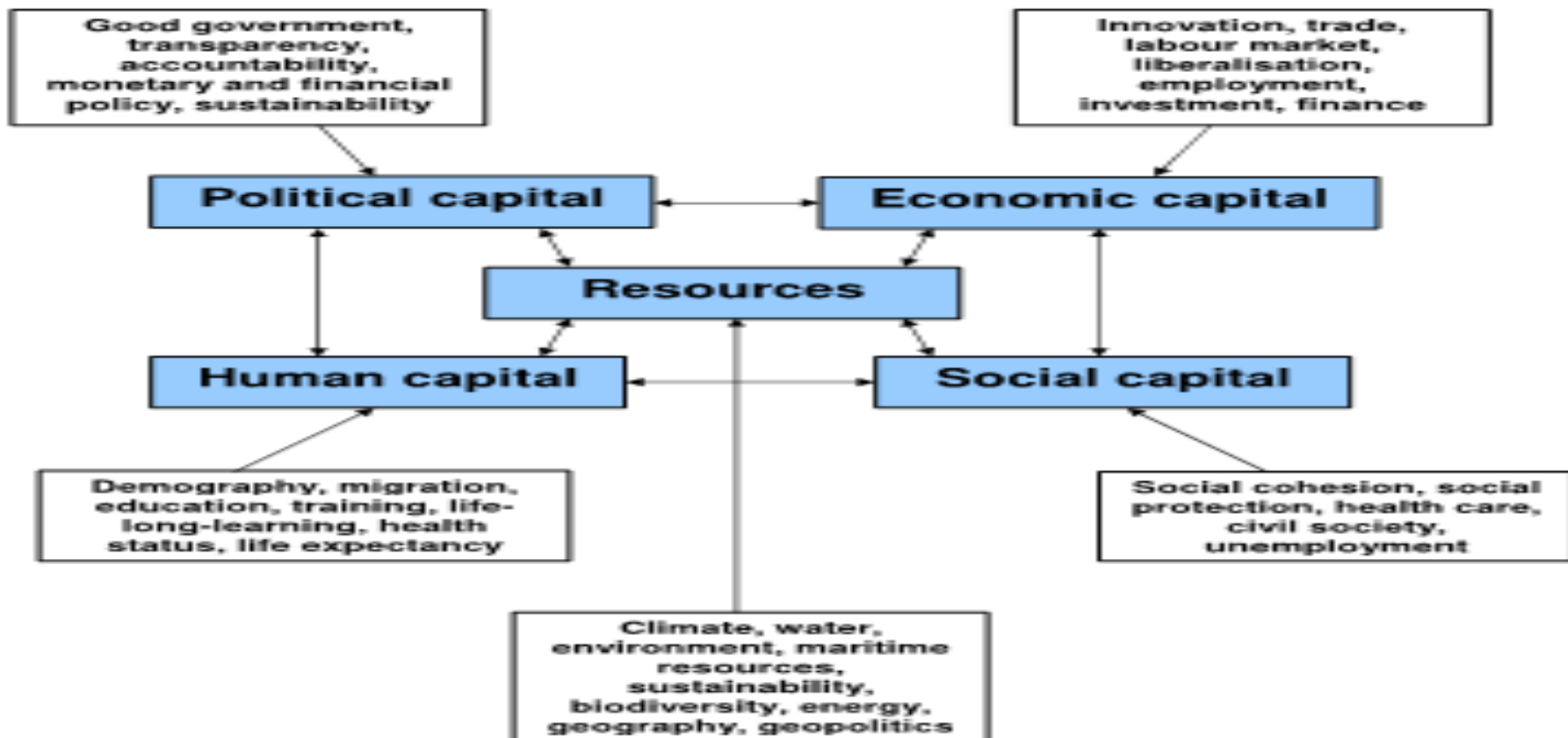


Thinking Ahead  
for the Mediterranean

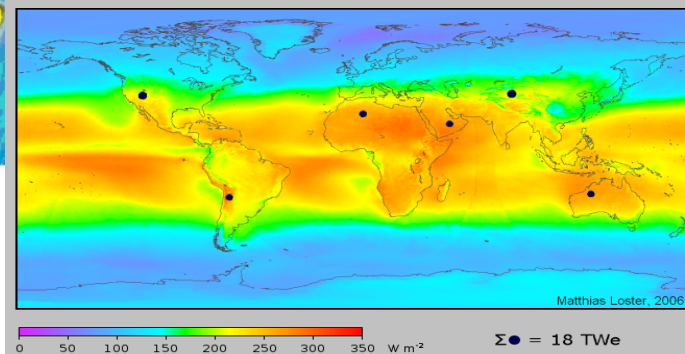
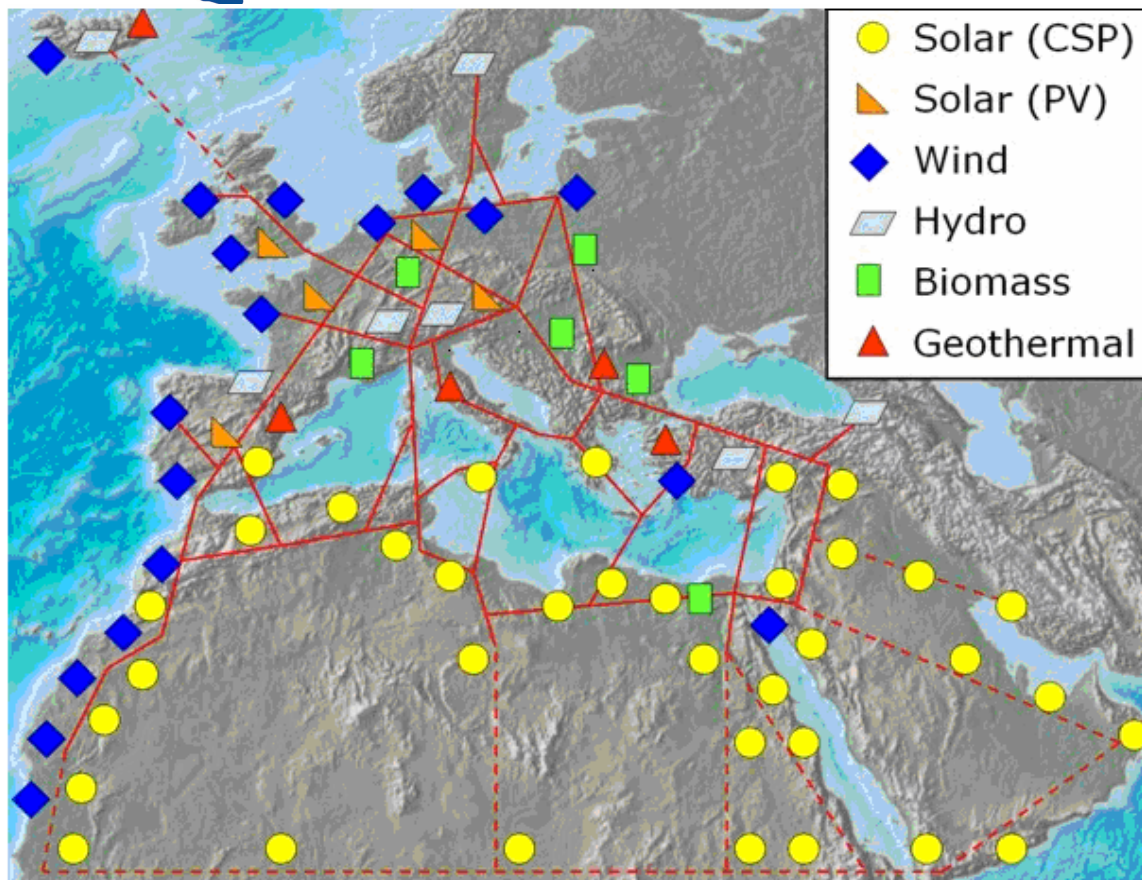
# Deployment for RE Use for Rural Areas : What Requirements?

Dr. Rym Ayadi, CEPS, MEDPRO Director & EMEA Founder

## Four pillars and the building ground



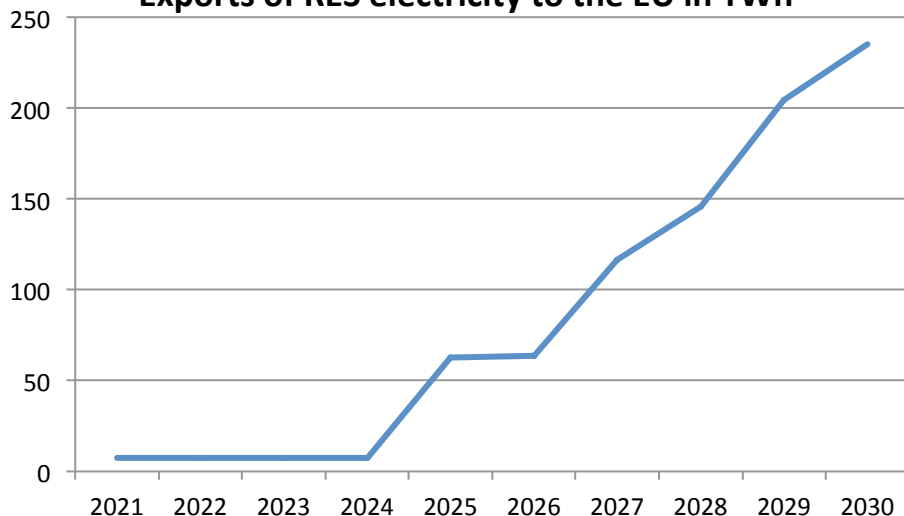
# RE Potential in SEMC



# MED-EU Cooperation Scenario

	2015	2020	2025	2030
MED-EU club CO2 emission reductions, ETS sectors relative to 2005	-24.1%	-28.7%	-32.8%	-45.1%
MED-EU club CO2 emission reductions, ETS sectors relative to reference scenario	-16.7%	-21.7%	-30.5%	-39.8%
Carbon price for ETS sectors in the MED-EU cooperation scenario(€/t of CO2)	13	25	35	60
Carbon price for ETS sectors in the EU alone scenario(€/t of CO2)	14	29	52	78

**Exports of RES electricity to the EU in TWh**

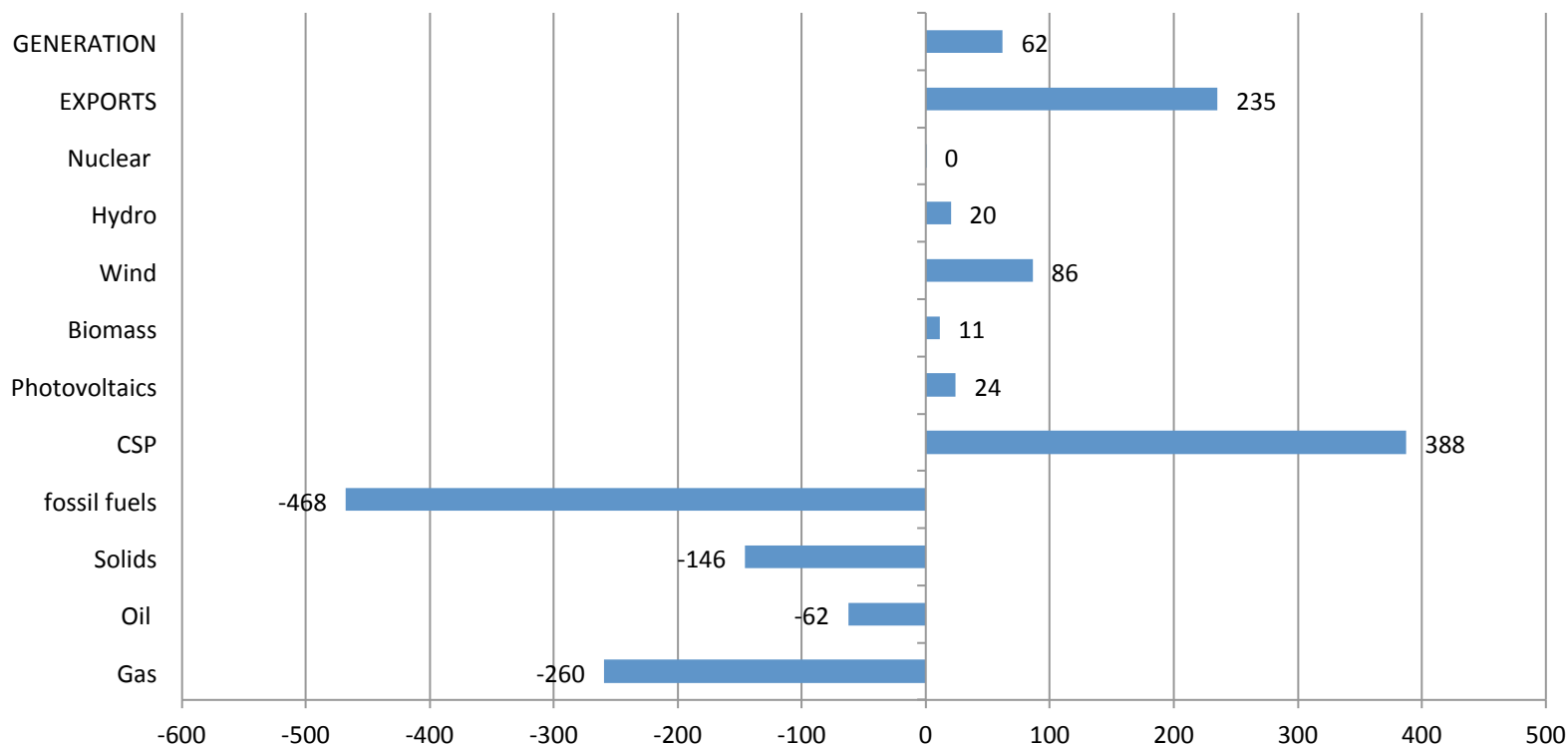


- Morocco is the first country to export RES electricity to the EU because of its proximity to Spain which becomes the first EU country to import under the scheme.
- By 2025, green electricity exports to Europe have taken off reaching over 60 TWh/year. Algeria and Libya become major players exporting mainly via Italy.
- The years between 2025 and 2030 see massive additions to export capacities with the region's exports nearly quadrupling to reach 235 TWh. New HVDC lines are constructed linking Algeria with Spain and France, Morocco with Spain and Tunisia with Italy
- Egypt takes part in this trade with some delay, due to late interconnection developments and accelerates integration post 2030
- In 2030, electricity exports represent 14.5% of total power generation in the region and cover 6.4% of the EU's electricity needs.

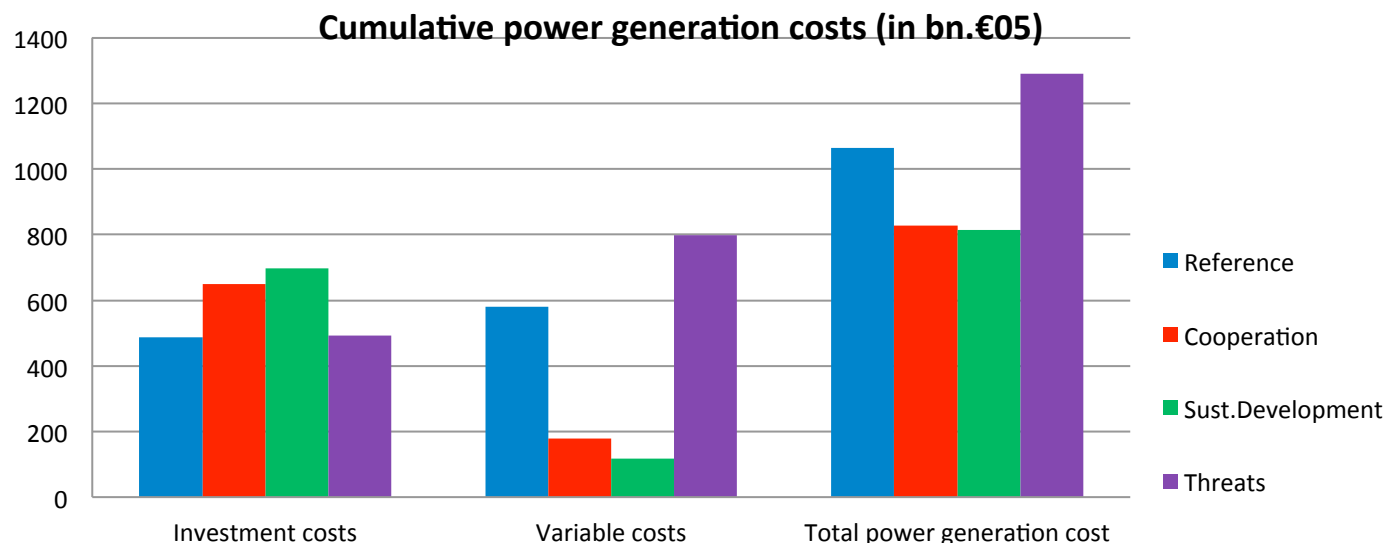


# MED-EU Cooperation Scenario

**Power generation: Changes from the reference scenario in 2030  
(in TWh)**

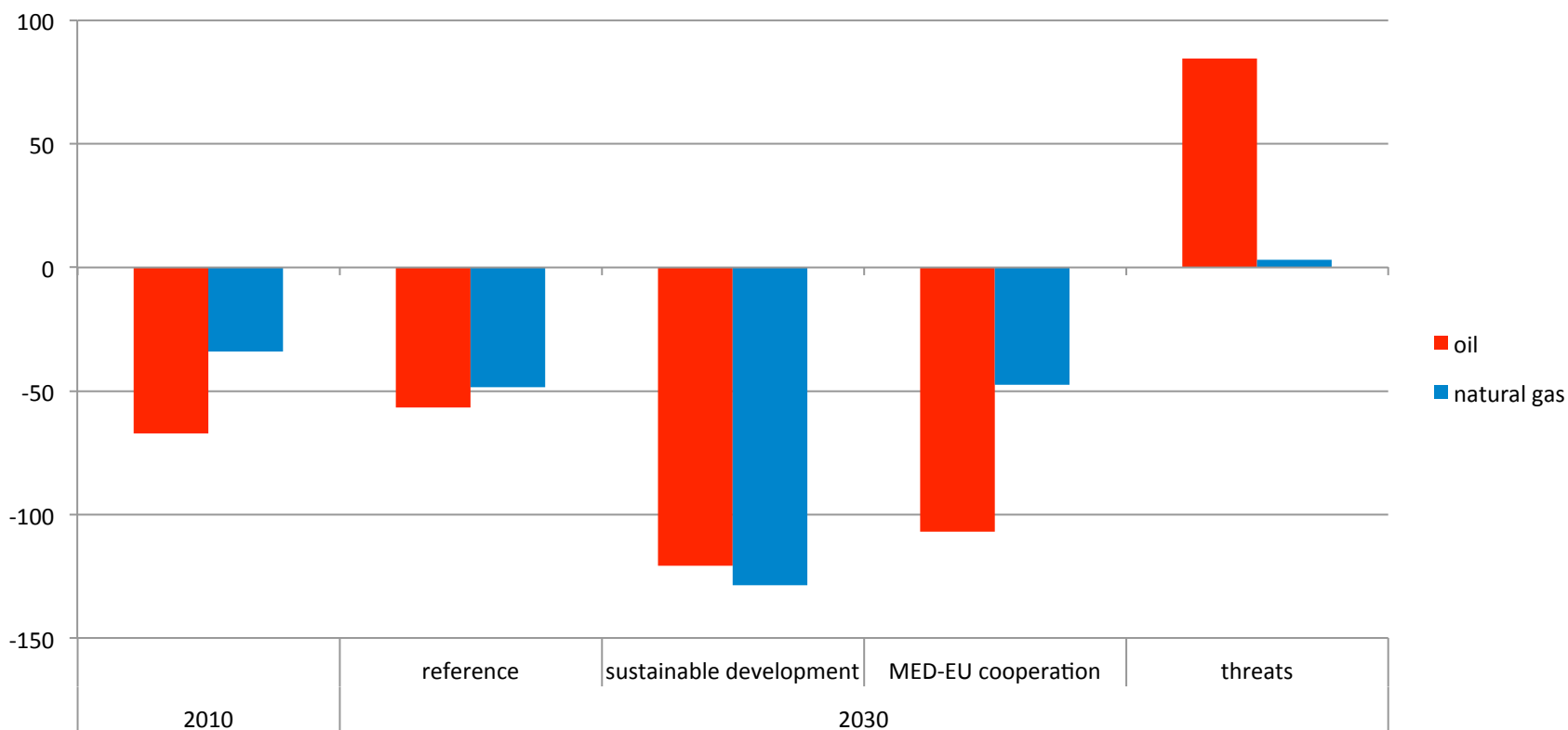


# MED-EU Cooperation Scenario



	Investment costs		Variable costs		Total power generation cost	
	in billions €'05	% change from reference	in billions €'05	% change from reference	in billions €'05	% change from reference
Reference	486.1		579.0		1065.1	
MED-EU cooperation	649.1	33.5%	179.2	-69.1%	828.4	-22.2%
Sustainable development	698.0	43.6%	117.5	-79.7%	815.5	-23.4%
Threats scenario	491.4	1.1%	799.4	38.1%	1290.8	21.2%

## Net imports (in Mtoe) of hydrocarbons in the MED-10 region in the alternative scenarios





# Thank you!

Contact:

Dr. Rym Ayadi ([rym.ayadi@ceps.eu](mailto:rym.ayadi@ceps.eu))





# About MEDPRO



<b>Title</b>	MEDPRO – Prospective Analysis for the Mediterranean Region
<b>Description</b>	MEDPRO explores the challenges facing the countries in the South Mediterranean region in the coming decades. The project will undertake a comprehensive foresight analysis to provide a sound scientific underpinning for future policy decisions at both domestic and EU levels.
<b>Mediterranean countries covered</b>	Algeria, Egypt, Israel, Jordan, Lebanon, Libya, Morocco, Palestine, Syria, Tunisia and Turkey
<b>Coordinator Consortium</b>	Dr. Rym Ayadi, Centre for European Policy Studies (CEPS) Centre for European Policy Studies, <b>CEPS</b> , Belgium; Center for Social and Economic Research, <b>CASE</b> , Poland; Cyprus Center for European and International Affairs, <b>CCEIA</b> , Cyprus; Fondazione Eni Enrico Mattei, <b>FEEM</b> , Italy; Forum Euro-Méditerranéen des Instituts de Sciences Economiques, <b>FEMISE</b> , France; Faculty of Economics and Political Sciences, <b>FEPS</b> , Egypt; Istituto Affari Internazionali, <b>IAI</b> , Italy; Institute of Communication and Computer Systems, <b>ICCS/NTUA</b> , Greece; Institut Europeu de la Mediterrania, <b>IEMed</b> , Spain; Institut Marocain des Relations Internationales, <b>IMRI</b> , Morocco; Istituto di Studi per l'Integrazione dei Sistemi, <b>ISIS</b> , Italy; Institut Tunisien de la Compétitivité et des Etudes Quantitatives, <b>ITCEQ</b> , Tunisia; Mediterranean Agronomic Institute of Bari, <b>MAIB</b> , Italy; Palestine Economic Policy Research Institute, <b>MAS</b> , Palestine; Netherlands Interdisciplinary Demographic Institute, <b>NIDI</b> , Netherlands; Universidad Politecnica de Madrid, <b>UPM</b> , Spain; Centre for European Economic Research, <b>ZEW</b> , Germany
<b>Budget and Funding</b>	Total budget: €3,088,573 EC-DG RESEARCH contribution: €2,647,330
<b>Duration</b>	1 April 2010 – 31 March 2013 (36 months)
<b>EC Scientific Officer</b>	Dr. Domenico Rossetti Di Valdalbero, DG RESEARCH
<b>Website</b>	<a href="http://www.medpro-foresight.eu">www.medpro-foresight.eu</a>
<b>Contact e-mail</b>	<a href="mailto:medpro@ceps.eu">medpro@ceps.eu</a>