



# الإسكوا

---

Distr.  
GENERAL

E/ESCWA/ICTD/2003/11/Add.6  
31 October 2003  
ORIGINAL: ENGLISH

\_\_\_\_\_

.....

..... -

..... TRA -

..... -

..... **(ICT)** -

..... -

..... -

..... -

..... -

..... -

..... -

..... **(ICT)** -

..... -

..... -

..... **ICT** -

..... **IT** -

..... -

..... -

..... -

..... -

..... -

..... -

..... -

..... -

..... -

( )

\_\_\_\_\_

..... -

..... -

..... -

..... -

..... -

..... -

..... -

..... UNTITLED -

..... UNTITLED -

..... UNTITLED -

..... UNTITLED -

..... UNTITLED -

..... UNTITLED -

..... ( / ) -

..... (LRC) -

..... ( / ) (LRC) -

..... / -

..... ICT -

..... -

..... -

..... -

..... -

( )

\_\_\_\_\_

.....(ICT) -

..... -

..... -

..... -

..... -

..... -

..... -

..... / -

..... -

..... UNTITLED -

..... UNTITLED -

6

..... -

..... -

..... -

..... -

e-Government

(ASPA)

.(UNDPEPA)

.Brown

MTC Vodaphone

(TRA)

/

(CPR)

(GDN)

(ECC)

(EDB)

.(CIO)

TRA

-

-

(TRA)

.(NTP)

:

( ) : (ISP/ )

-

-

( ) :

:( )

/VSAT

( )

( ) :Paging /(PAMRS)

:( )

:( )

-

(ICT)

-

-

Batelco

MTC Vodaphone

Batelco

(IT)

:

( )

( )

( )

(FMC )

( )

( )

ATM

ISDN

VSAT

LAN-Connect

GSM

( )

.GSM

( )

:

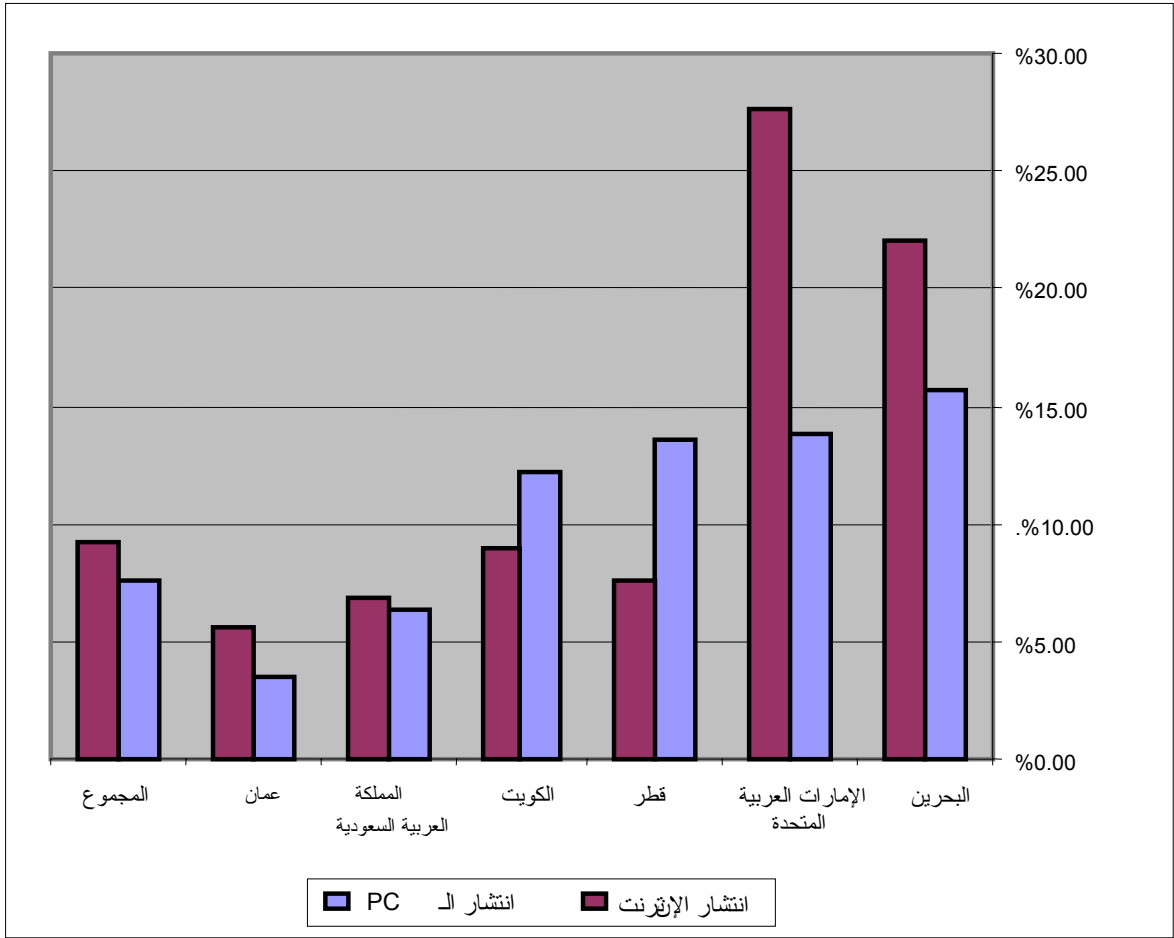
( )

( )

( )

( )

/



(CAGR)

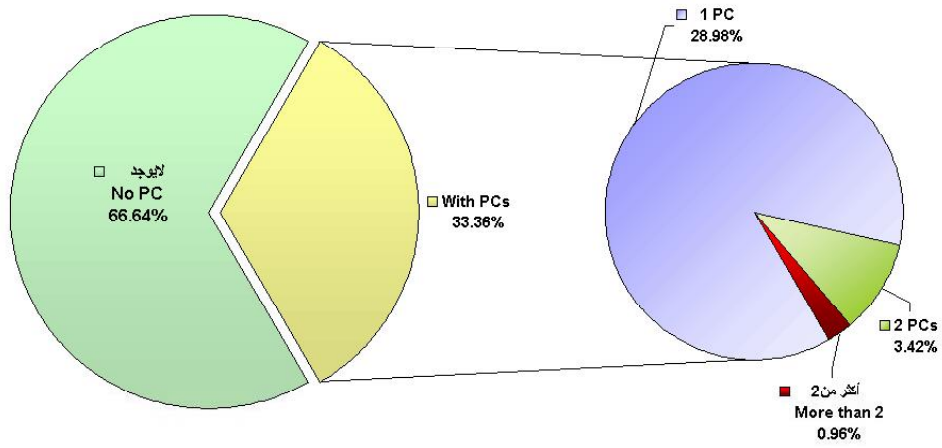
Census

(CIO)

Census



رسم بياني 48  
 - نسبة الوحدات السكنية بحسب عدد أجهزة الحاسب الآلي الشخصية 2001م  
 Percentage of Housing Units By Number of Personal Computers - 2001



/

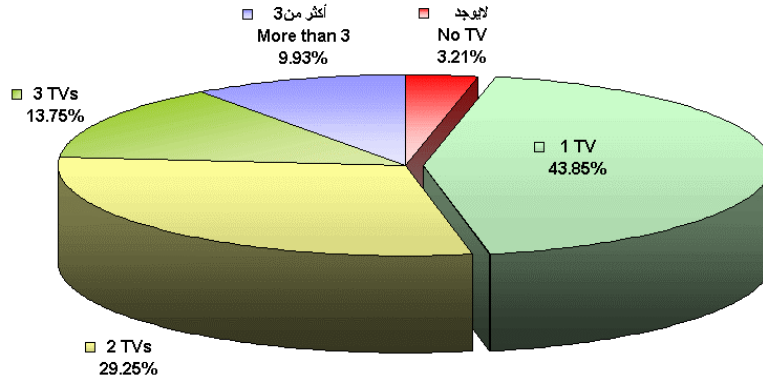
| PC | ( ) | PC | ( ) | PC |
|----|-----|----|-----|----|
| /  | /   | /  | /   | /  |
| /  | /   | /  | /   | /  |
| /  | /   | /  | /   | /  |
| /  | /   | /  | /   | /  |
| /  | /   | /  | /   | /  |
| /  | /   | /  | /   | /  |
| /  | /   | /  | /   | /  |

-

Census

Batelco ( , )

**Graph 36**  
 - نسبة الوحدات السكنية بحسب عدد التلفزيونات 2001م  
**Percentage of Housing Units by Number of TVs - 2001**



[www.inet.com.bh](http://www.inet.com.bh) : \_\_\_\_\_

$$(BD) \quad 0.378 = \quad 1 ( )$$

$$\cdot \quad 1000 = \quad 1 ( )$$

|      |   |     |  | inet  |       |
|------|---|-----|--|-------|-------|
|      |   |     |  | 3 BD  |       |
|      |   |     |  | 3 BD  | 5 BD  |
|      |   |     |  | 6 BD  | 10 BD |
| ISDN | - | ( ) |  | 3 BD  | 5 BD  |
|      | - |     |  |       |       |
| ISDN | - |     |  | 6 BD  | 10 BD |
|      | - |     |  | 20 BD | 27 BD |
|      |   |     |  |       | IP    |

inet900 \_\_\_\_\_ -

Internet explorer

Inet -

inet  
" Batelco inet "  
inet

-

---



---

|  |      |
|--|------|
|  | 3 BD |
|  | 5 BD |
|  | 8 BD |

|     |      |      |      |        |      |
|-----|------|------|------|--------|------|
|     | inet |      | inet |        |      |
| GSM |      | .( K |      | ) ISDN | PSTN |
| GSM |      |      | inet |        |      |

RESIDENTIAL -

."always-on"

|         |  |          |  |          |  |
|---------|--|----------|--|----------|--|
|         |  | (        |  | ) ADSL   |  |
| 384kb/s |  | 256 kb/s |  | Speednet |  |

:

( )

Windows 98, 98 SE, 2000, :

|  |                                    |     |
|--|------------------------------------|-----|
|  | Speed Touch USB                    | ( ) |
|  | ME, XP, Mac OS 8.6, 9.0, X & Linux |     |

-

|                     |        |        |        |              |
|---------------------|--------|--------|--------|--------------|
|                     | -      | 40 BD  | 30 BD  | 256 kb/s     |
|                     | -      | 50 BD  | 30 BD  | 384 kb/s     |
|                     | -      | 50 BD  | 5 BD   | 384 k 256 k  |
|                     | -      | 40 BD  | 5 BD   | 256 k 384 k  |
| ADSL                | -      | 40 BD  | 10 BD  | 256 kb/s ( ) |
| :                   | -      | 50 BD  | 10 BD  | 384 kb/s ( ) |
| GreatSpeed USB :    | Inma • | 5 BD   | 10 BD  | 128 kb/s ( ) |
| AZTech USB :        | •      | 0.045  | 10 BD  | ( )          |
| Alcatel: SpeedTouch | •      |        |        | ( )          |
|                     |        | 0.035  | 15 BD  | 128 kb/s     |
|                     |        | 400 MB |        | ) 400MB      |
|                     |        | (      |        | (            |
|                     | -      | -      | 4 BD   |              |
|                     | -      | *      | 15 BD  |              |
|                     | -      | -      | 120 BD | USB          |

SPEED NET BUSINESS : -

Speednet

.Batelco

**VOLUME BASED PACKAGE :** ( )

(one-off)

2GB

2GB

**FLAT RATE PACKAGE :** ( )

(ONE-OFF)

Flat Rate Unlimited

-

| ( )          | ( )    | ( )          | ( )    | ( )   | Speednet                   |
|--------------|--------|--------------|--------|-------|----------------------------|
| 0.025 BD/1MB | 40 BD  | 0.035 BD/1MB | 80 BD  | 60 BD | 256kbps<br>/64kbps<br>2GB  |
| 0.025 BD/1MB | 60 BD  | 0.035 BD/1MB | 120 BD | 60 BD | 512kbps<br>/128kbps<br>2GB |
|              | 140 BD |              | 280 BD | 60 BD | 256kbps<br>/64kbps         |
|              | 225 BD |              | 450 BD | 60 BD | 256kbps<br>/128kbps        |

: \_\_\_\_\_

:

ADSL Ethernet ( )  
( )

(Speednet ) IP ( )

.IP

-

| IP    |        |        |
|-------|--------|--------|
| 75 BD | 150 BD | 120 BD |

: \_\_\_\_\_

.WEB 20MB IP ( )  
( )

Inet -

inet Dedicated Access

Batelco

IP

inet Dedicated Access

IP

online " "

proxy

WEB

inet Dedicated Access  
(VPN)

inet Dedicated Access -

.On-line

( )  
( )

Inet Dedicated Access -

2Mbps & 32Kbps

:On-line

-  
-  
.On-line

:  
\_\_\_\_\_

:  
\_\_\_\_\_

:  
\_\_\_\_\_

\_\_\_\_\_ :

Domain Name ( )  
Web ( )  
( )  
ISP ( )  
( )

-

---

|      |      |        |
|------|------|--------|
| (BD) | (BD) | (Kbps) |
|------|------|--------|

---

(ICT)

-

-

( )

( )

\_\_\_\_\_ -

/ (ICT) ( )

( )

(2002) \_\_\_\_\_ -

Frame Relay ( )  
Dial-up 52 ( )  
56 Kbps  
Dial- 114 ( )  
56 Kbps up  
( )  
. / ( )

( / )

-

/

/

(LRC)

( / )

(LRC)

-

/

-

-

-

/



( )

---

---

---

---

---

---

---

---

---

---

---

---

---

---

---

---

---

---

---

---

---

---

---

/

-

/

- - - -

/

/

/ -

---



---



---



---



---



---



---



---



---



---

(ICT)

-

ICT

( )

---

|   |   |   |   |   |   |   |   |   |   |   |   |
|---|---|---|---|---|---|---|---|---|---|---|---|
| ' | ' | ' | ' | ' | ' | ' | ' | ' | ' | ' | ' |
| ' | ' | ' | ' | ' | ' | ' | ' | ' | ' | ' | ' |
| ' | ' | ' | ' | ' | ' | ' | ' | ' | ' | ' | ' |
| ' | ' | ' | ' | ' | ' | ' | ' | ' | ' | ' | ' |

---

-

IT

IT

-

.(GIS)

-

---



---



---

Berla

BSC

IT

IT Microsoft, Adobe, Sun, Cisco :  
Aptech, NIIT, & New Horizon

IT

ICT

-

IT

-

Microsoft, IBM, Cisco, & Oracle:

IT

IBM

IBM

IT  
IT

.IT

IBM

-

-

IT

hardware  
.software

-

-

([www.commerce.gov.bh](http://www.commerce.gov.bh))

web

(CR)

(online) "

"

.online "

"

(CR)

eInvestorPilot Project (eIPP)

(CR)

.(MOCI)

-

" "

GDN

-

web

) FMIS)

GDN

:

-

web

.online "

"

-

web

" " I-Net "

www.bahraincustoms.gov.bh

( )

.EDI

-

.HRMS

-

web

" "

-

-

|            |  |            |           |  |
|------------|--|------------|-----------|--|
|            |  |            |           |  |
| NDS        |  |            |           |  |
| SSI        |  | DRP GDNOC  |           |  |
| DRP        |  | GDN        |           |  |
| ATP NDS    |  |            | (IBM) NDS |  |
|            |  | NDS        | (IBM)     |  |
| CRP<br>NDS |  | SSI        | (IBM) ATP |  |
| CRP<br>NDS |  | ATP        | CSO       |  |
| CRP<br>NDS |  | DRP        | GDNOC     |  |
| CRP<br>NDS |  | CPR<br>NDS | CSB       |  |

CIO

IT

GDN

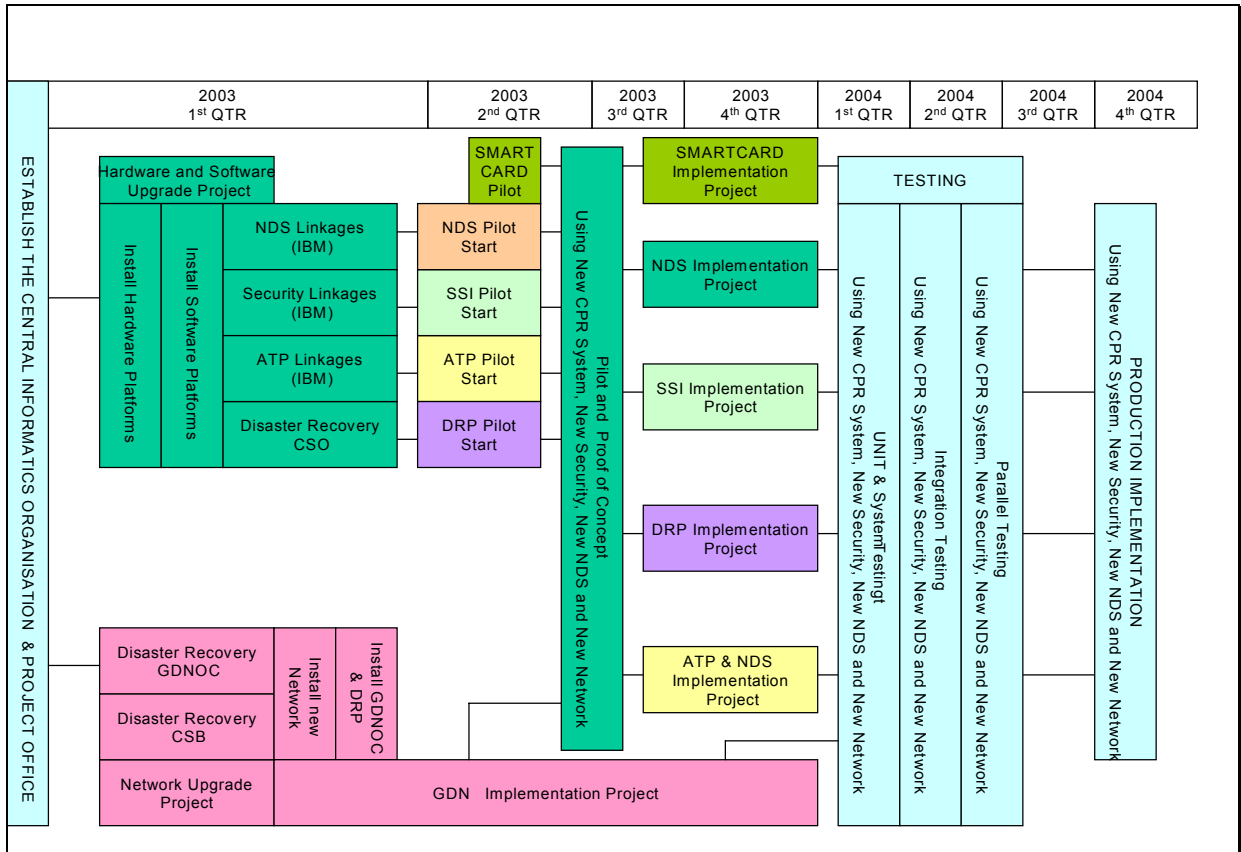
CRP

( )

( )

( )

.CIO



.e-system

.( )



( )

( )

( )

:

" .

/

- "

(ASPA)

(UNDPEPA)

'

'

'

'

'

'

'

'

'

'

'

'

'

'

'

'

'

'

'

'

'

"

ICT

"

/

Rhode Island

Brown

Brown

"

"

.( )

( )

-

'

'

'

'

'

'

'

'

'

'

'

'

'

'



( )

-

---



---



---

|   |   |
|---|---|
| / | / |
| / | / |
| / | / |
| / | / |
| / | / |
| / | / |

---

: ( )

ICT

: ( )

.CIO

EDB

(CIO)

WEB

(CMS)

[www.bahrain.gov.bh](http://www.bahrain.gov.bh)

.Post Nuke

/ EDB

EBD

"

"

.( )

Microsoft, Adobe, Sun, Cisco

Apech,

.NITT,& New Horizon

Polyglot School

.Berlitz and Alliance Francaise

Cambridge School

.De Paul

Maryland

.ICT

ICT

web

( )

(AGFUND)

: ) ABC TAIB BBK  
 (

BBK

ACI

/ -  
 -( )  
 /

[www.moh.gov.bh](http://www.moh.gov.bh)

/ ) ( )  
 (.... ( )

|   |   |     |                    |     |
|---|---|-----|--------------------|-----|
|   |   |     |                    |     |
|   |   |     |                    | -   |
|   | ' | '   |                    | -   |
|   | ' | '   |                    | -   |
|   |   |     |                    | -   |
|   | ' |     | ( )                | -   |
|   |   |     | ( , )              | -   |
|   | - | -   |                    | -   |
|   | ' |     | GNI per capita     | -   |
|   | ' | '   | GDP                | -   |
|   |   |     |                    | -   |
| ' | ' | '   | ( )                | -   |
|   |   |     | ( )                | -   |
|   |   |     | ( )                | -   |
|   |   |     | ( )                | -   |
| ' |   |     | ( )                | -   |
| ' | ' | '   | ( )                | -   |
| ' |   |     | ( )                | -   |
| ' |   | ( ) |                    | -   |
|   |   |     |                    | -   |
|   |   |     | ISDN               | -   |
|   |   |     | ( )                | - - |
|   |   |     | ( )                | - - |
|   |   |     | DSL                | -   |
| ' | ' |     | ( )                | - - |
| ' | ' |     | ( )                | - - |
|   |   |     |                    | -   |
|   |   |     | ( )                | - - |
|   |   |     | ( )                | - - |
| - | - | -   |                    | -   |
| - | - | -   | ( )                | - - |
| - | - | -   | ( )                | - - |
|   |   |     | ( )                | -   |
|   | - |     | ( )                | -   |
| ' | ' | '   |                    | -   |
|   |   |     |                    | -   |
|   |   |     | <b>Multi-media</b> | -   |
|   |   |     |                    | -   |
|   | ' |     |                    | -   |
|   | ' |     |                    | -   |
|   |   |     | ( + )              | ₹-३ |

( ) \_\_\_\_\_

|  |      |  |                 |      |
|--|------|--|-----------------|------|
|  |      |  |                 | -    |
|  |      |  |                 | 1-ε  |
|  |      |  |                 | 2-ε  |
|  |      |  |                 | 3-ε  |
|  |      |  |                 | ε-ε  |
|  |      |  |                 | 0-ε  |
|  |      |  |                 | 6-ε  |
|  |      |  | ISP's           | 7-ε  |
|  |      |  | ( ) ISP's       | 8-ε  |
|  |      |  | ( )             | 9-ε  |
|  |      |  |                 | 10-ε |
|  |      |  |                 | 11-ε |
|  |      |  |                 | 12-ε |
|  |      |  |                 |      |
|  |      |  | ICT             | -    |
|  |      |  | (\$ million)    | 1-0  |
|  |      |  | (\$ million) IT | 2-0  |
|  | 2,0  |  | ( ) GDP         | 3-0  |
|  | 20,0 |  | ( ) ICT         | ε-0  |
|  |      |  |                 |      |
|  |      |  |                 | -    |
|  |      |  | R&D             | 1-6  |
|  |      |  | (% GNI ) R&D    | 2-6  |
|  |      |  | ICT             | 3-6  |
|  |      |  |                 |      |
|  |      |  |                 | -    |
|  |      |  |                 | 1-7  |
|  |      |  |                 | 2-7  |
|  |      |  | IPR             | 3-7  |
|  |      |  | WTO             | ε-7  |
|  |      |  |                 | 6-7  |
|  |      |  |                 | 7-7  |
|  |      |  |                 |      |
|  |      |  |                 | -    |
|  |      |  |                 | 1-8  |
|  |      |  |                 | 2-8  |
|  |      |  |                 | 3-8  |
|  |      |  | IT              | ε-8  |
|  |      |  |                 | 0-8  |
|  |      |  |                 | 6-8  |
|  |      |  |                 | 7-8  |
|  |      |  |                 |      |
|  |      |  | ICT             | -    |
|  |      |  | ICT             | -    |
|  |      |  | ICT             | -    |
|  |      |  |                 | -    |

Economic Development Board

P.O. Box 11299

Manama, Bahrain

Tel: +973 58 33 11

Fax: +973 58 33 22

Email: [edb@bahrainedb.com](mailto:edb@bahrainedb.com)

Central Informatics Organization

Manama, Bahrain

P.O.Box: 5835

Tel: +973 725725

Fax: +973 728989

Email: [cio@informatics.gov.bh](mailto:cio@informatics.gov.bh)

Telecommunication Regulatory Authority

P.O.Box 10353,

Manama, Bahrain

Tel: +973 540120

Fax: +973 532125

Email: [Contact@tra.org.bh](mailto:Contact@tra.org.bh)

Bahrain Telecommunication Company

P.O.Box 14

Manama, Bahrain.

Tel: +973 884 557

Fax: +973 611 898

Email: [batelco@btc.com.bh](mailto:batelco@btc.com.bh)

Bahrain Information Technology Society

P.O.Box 26089,

Manama, Bahrain

Tel +973 710018

Fax +973 714732

Email: [bits@batelco.com.bh](mailto:bits@batelco.com.bh)

Bahrain Internet Society

P.O.Box: 26089

Manama, Bahrain

Tel: +973 822099

Fax: +973 9106699

Email: [club@ic.org.bh](mailto:club@ic.org.bh)

|        |  |     |
|--------|--|-----|
| ADSL   | Asynchronous Digital Subscriber Line                                   |     |
| AGFUND | Arab Gulf for the Support of United Nations Developmental Organization |     |
| ASPA   | American Society for Public Administration                             |     |
| ATM    | Asynchronous Transmission Multiplex                                    |     |
| CIO    | Central Informatics Organization                                       |     |
| CMS    | Content Management System  |     |
| CPR    | Central Population Register  |     |
| CR     | Commercial Registration  |     |
| CSB    | Civil Services Bureau  |     |
| DRP    | Disaster Recovery Plan   |     |
| ECC    | e-Commerce Committee   |     |
| EDB    | Economic Development Board   |     |
| EDI    | Electronic Data Interchange  |     |
| eIPP   | e-Investor Pilot Project   |     |
| FMC    | Facility Management Center   |     |
| FMIS   | Financial Management Information system                                |     |
| GB     | Giga Bit   | bit |
| GCC    | Gulf Cooperation Countries   |     |
| GDN    | Government Data Network  |     |
| GIS    | Geographical Information System  |     |
| GSM    | Global System for Mobile Communication                                 | GSM |
| HRMS   | Human Resources Microsystem  |     |
| ICT    | Information & Communication Technology                                 |     |
| IP     | Internet Protocol  |     |
| ISDN   | Integrated Speech & Data Network                                       |     |
| ISP    | Internet Service Provider  |     |
| IT     | Information Technology   |     |
| LAN    | Local Area Network   |     |
| LRC    | Learning Resources Center  |     |
| MoFNE  | Ministry of Finance and National Economy                               |     |
| NDS    | National Data Set  |     |
| NTP    | National Telecommunication Plan  |     |
| PAMRS  | Public Access Mobile Radio service                                     |     |
| PKI    | Public Key Infrastructure  |     |
| PSTN   | Public Switching Telephone   |     |
| SSI    | Security Strategy Implementation                                       |     |
| TRA    | Telecommunication Regulatory Authority                                 |     |
| VAST   | Very Small Aperture Terminal   |     |
| VPN    | Virtual Private Network  |     |
| WTO    | World Trade Organization   |     |

Flat Rate

Dedicated Access Line

Frame Relay

Dial-up Modem

Information Society

National Fixed Service License

Inter- Exchange Fiber Optical Links

Internet Explorer

Performance Measurement Process

Security Forum

Architecture Adherence Policy

Central Technical Platform

Network Topology

Government Portal Project

Tertiary Education Sector

Strategic Health Information System