



الإسكوا

Distr.
GENERAL

E/ESCWA/ICTD/2003/11/Add.8
12 November 2003
ORIGINAL: ARABIC

.....

.....

-

.....

-

.....

-

.....

-

.....

-

.....

-

.....

-

.....

-

.....

-

.....

-

.....

-

.....

-

.....

-

.....

-

.....

-

.....

-

.....

-

.....

-

.....

-

.....

-

.....

-

.....

-

.....

-

.....

-

.....

-

.....

-

()

.....

..... Information society indicators for Palestine -
..... -

..... -
..... -

..... -
..... -
..... -

..... -
..... -

..... -
..... -

..... -
..... -

()

()

.[]

--

.()

.()

:

.[]

/

-

(-)

(-)

:

-

-

/
/
/
/
/
/
/
/
/

: _____

- -

/

-

51	0	4	39	2	6
7	2	2	1	0	2
58	2	6	40	2	8

: _____

-

: _____

-

:

. []

:

:

:

.

--

-

:

/

-

() :

--

-

/

()

: _____

-

-

/) /

/

(

/

--

)

(

- -

()

KACM

()

:

- -

_____ -

/

/

:

()

()

()

()

()

()

_____ -

()

.

.

.

.

.

,

.

,

,

.

,

)

(

.

,

.(/

)

" "

.

.

.

/

-

-

-

-

-

-

-

-

-

-

-

()

:

/

-

*

**

*

+

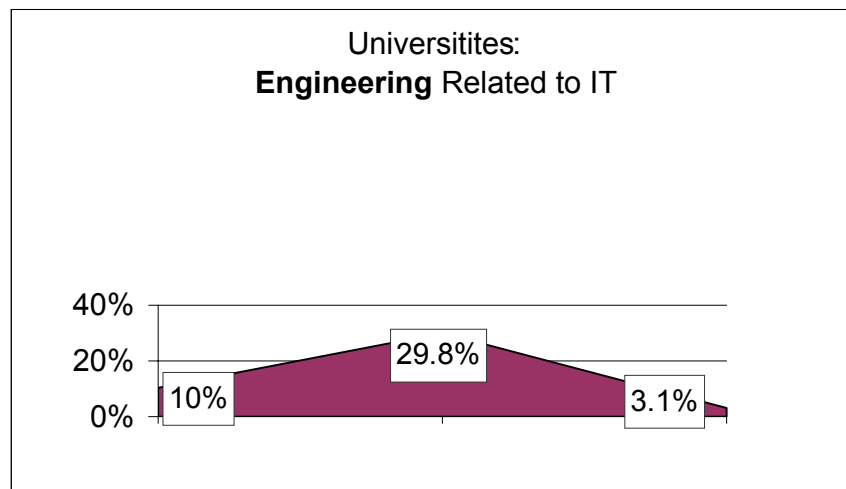
+

+

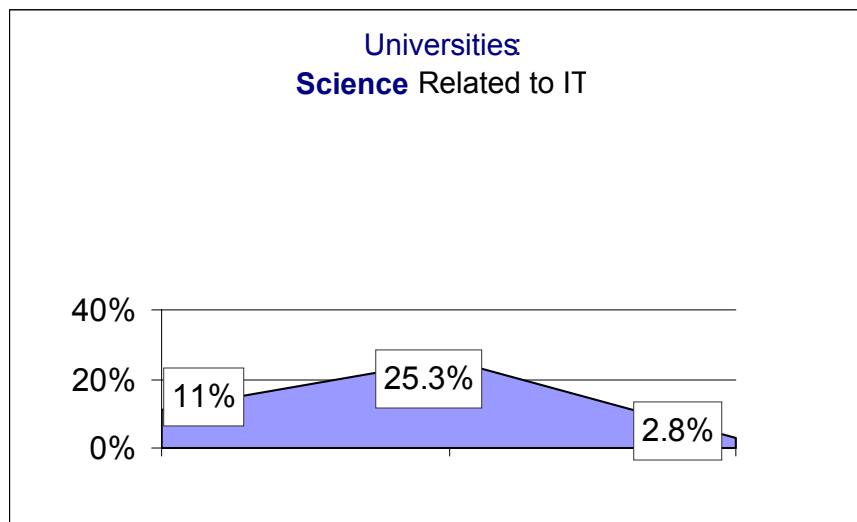
+

+

-



-



-

future kids

:

()

()

()

()

()

()

()

()

()

:

()

()

()

()

()

()

- -

-

consultancy and training services

	software implementation	integrated systems
data conversion	data processing services	localization
	remote processing	

)

.(

ATMs

"

:

- -

.HP, IDS, Timex, Seimens, Microsoft

ACER IBM Sun Microsystems Oracle

-

+

+

: _____

[]

- -

-

.

.

.

.

.

.

:

.

-

.

.

-

)

(

.

- -

-

"

-

-

()

:

CMM

-

:A, B, C

()

()

()

- -

()

()

()

()

" "

()

.

.

.

.

.

-

-

.

.

.

-

.

.

:

()

()

()

- -

-

-

-

-

.

.

.

.

.

:

.

:

.

:

:

-

:

()

()

()

(())

) ()

)

()

(

(PITA)

:

()

()

()

()

()

()

()

()

()

:

- -

" "

.

.

.

-

()

()

.

()

)

(

()

.

.

.

.

.

.

	[]
http://www.moe.gov.ps	[]
http://www.moe.gov.ps	[]
http://www.paltel.net	[]
http://www.pita-palestine.org	[]
	[]
http://www.ni-it.org	[]
http://www.aauj.edu/itc2003	[]
http://it-anera-jwg.org	[]
http://www.gcc.gov.ps	[]
http://www.dai.com	[]
http://www.wa.org	[]
http://www.palestinegateway.org	[]

Indicator	Y2000	Y2001	Y2002
1. Basic Background Indicators			
1.1 Population	3,000,000		
1.2 Area			
1.3 Density	NA	NA	NA
1.4 Urban Population	NA	NA	
1.5 Adult literacy	85%		
1.6 Poverty	70%	NA	NA
1.7 GNI per capita	NA	NA	NA
1.8 GDP Growth			
2. Telecom Infrastructure			
2.1 Fixed lines (total)	NA	NA	
2.2 Domestic (lines per household)	NA	NA	
2.3 Urban(%)	NA	NA	NA
2.4 Waiting list (total number)			
2.5 Waiting time (average)			
2.6 Revenue per line(\$)	NA	NA	NA
2.7 Cost of local call (\$ per 3 minutes)			
2.8 Cost of call within region (\$ per 3 minutes)	NA	NA	
2.9 Cost of call to US (\$ per 3 minutes)	NA	NA	
2.10 Number of fixed lines operators			
2.11 ISDN lines	NA	NA	NA
2.11.1 Initial cost (\$)	NA	NA	NA
2.11.2 Monthly charge (\$)	NA	NA	NA
2.12 DSL lines	NA	NA	NA
2.12.1 Initial cost (\$)	NA	NA	NA
2.12.2 Monthly charge (\$)	NA	NA	NA
2.13 Leased lines	NA	NA	NA
2.13.1 Initial cost (\$)	NA	NA	
2.13.2 Monthly charge (\$)	NA	NA	
2.14 Cable	NA	NA	NA
2.14.1 Initial cost (\$)	NA	NA	NA
2.14.2 Monthly charge (\$)	NA	NA	NA
2.15 Outgoing traffic (minutes per subscriber)	NA	NA	NA
2.16 Incoming traffic (minutes per subscriber)	NA	NA	NA
2.17 Mobile lines	NA	NA	NA
2.18 Number of mobile operators	NA	NA	NA

- -
Annex I (continued)

Indicator	Y2000	Y2001	Y2002
3. Media Infrastructure			
3.1 Radios			
3.2 Television			
3.3 Satellites	NA	NA	NA
3.4 Daily Newspapers	4		
4. Computers and Internet			
4.1 Personal computers		40,000	
4.2 Personal computers in education		20,000	
4.3 Percentage of computers that are networked		70%	
4.4 Internet subscribers		100,000	
4.5 Internet users			300,000
4.6 Internet hosts			
4.7 SP's			20
4.8 ISP monthly charges (\$)			10 - 20
4.9 Telephone usage charges (\$)			\$25/month
4.10 Available national bandwidth	NA	NA	60 Mb/s
4.11 Hosting availability			Available
4.12 Secure servers			
5. ICT expenditure			
5.1 Telecom expenditure (million\$)	NA	NA	NA
5.2 IT expenditure (million \$)	NA	NA	NA
5.3 Percentage of GDP(%)	NA	NA	NA
5.4 ICT per capita(\$)	NA	NA	NA
6. Capacity building			
6.1 Scientists and engineers in R&D			Unknown
6.2 R&D expenditure (% of GNI)			Unknown
6.3 ICT related university graduate per year			400
7. ICT government and business environment			
7.1 e-readiness index	NA	NA	NA
7.2 e-government index	NA	NA	NA
7.3 IPR enforcement			Negative
7.4 Compliance with WTO			Underway
7.5 Basic telecom agreement			
7.6 Reference paper	NA	NA	NA
8. Laws and regulations			
8.1 Patent law			Y
8.2 Trademark law			Y

- -

Annex I (continued)

Indicator	Y2000	Y2001	Y2002
8.3 Copyright law			Y
8.4 IT agreement	NA	NA	NA
8.5 e-commerce law	NA	NA	Being drafted
8.6 e-signature law	NA	NA	Being drafted
8.7 Piracy law	NA	NA	
9. ICT policy			
9.1 ICT strategy			None
9.2 ICT plan of action	NA	NA	
9.3 National initiatives	NA	NA	

*Mid of the year

**Labor force survey

NA=Not Available

/

:

.[]

()
()

()
()

()

:

.[]

:

()

.[]

:

()

()

:

()

()

:

()

:

()

()

()

.(

)

()

()

()

.[]

.[]

:

/

:

()
()

(USAID)

DAI