

ESCWA Statistical Information System- ESIS Introduction

Dr. Wafa Aboul Hosn

Statistics Division, ESCWA

and

Therese El Gemayel

**Training on Environment Statistics
and Accounts**

2-4 November 2010

Khartoum, Sudan

1

ESIS DATABASE

Produce, distribute and **update** a **database**, **docubase**,
and expertbase on environment information for
ESCWA



ESIS Database Environment and Water

- Desktop →
- WebPortal →
- ESCWA vs. Member Countries →

3

ESIS DATABASE

The screenshot displays the ESIS Database Administration interface. The top navigation bar includes 'Users', 'Administration', 'Data Management', 'Reports', and 'Help'. The left sidebar shows 'Divisions', 'Groups', and 'Users'. The main content area is divided into two sections: 'Users' and 'User Permissions'.

Users Section: A table listing users with columns: Group Id, Division, Full Name, Username, Password, Email, and Registration Date. The table contains several entries, including 'Subana Al Nazawi' and 'Linda Mattar'.

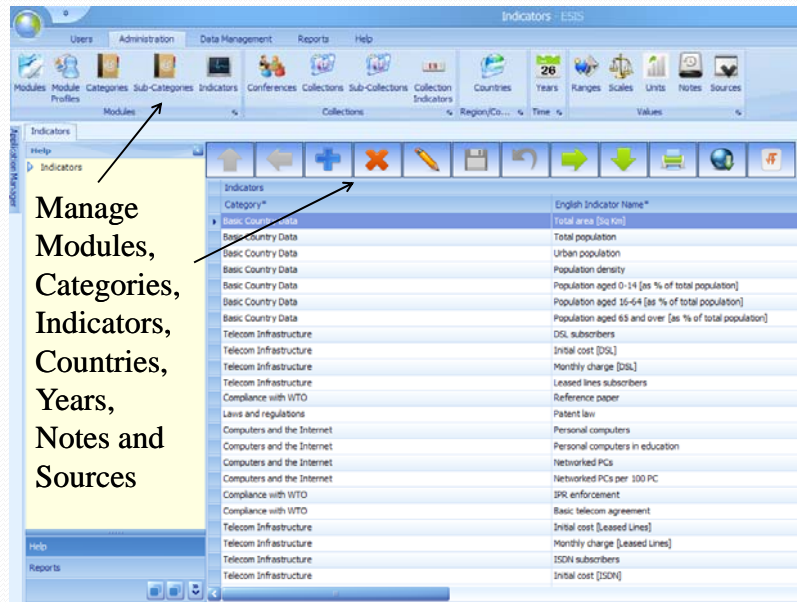
User Permissions Section: A table with columns: Form, Can Display, Can Add New, Can Update, Can Print, and Can Delete. It lists various forms like 'InfoForm', 'ManageDataStatus', and 'ProcessDerivedIndicators'.

Annotations:

- A yellow box on the left contains the text: "Insert, Manage and Delete Divisions, Groups and Users" with an arrow pointing to the 'Users' tab in the sidebar.
- A yellow box on the right contains the text: "Define users permissions" with an arrow pointing to the 'User Permissions' tab.

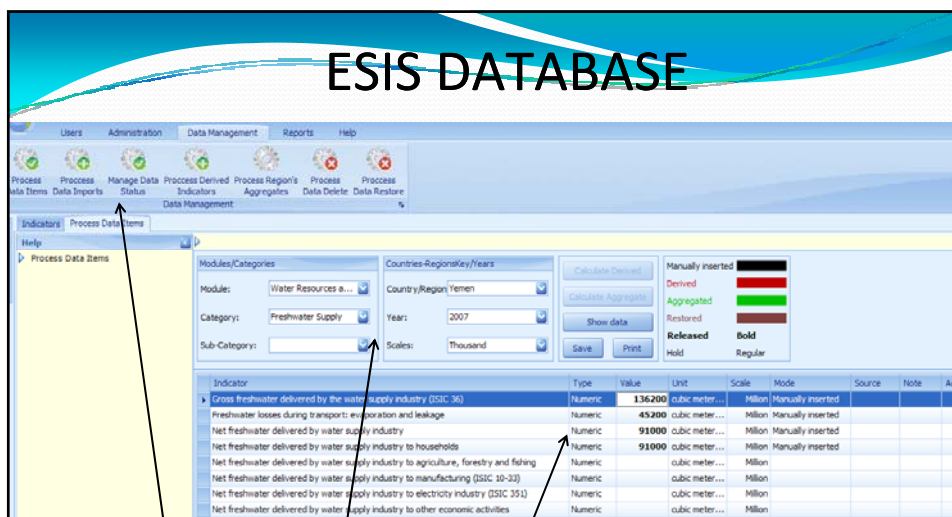
4

ESIS DATABASE



5

ESIS DATABASE



6

ESIS- ESCWA vs. Member Countries

ESCWA	Member Countries
All Administrative features	All Administrative features
All Reporting Features	All Reporting Features
Data for all Member Countries	Data for the specified Country
ESCWA gathers and enters data	Member country enters their own data
ESCWA disseminates Data	Member Country disseminates Data

9

Thank you