



# UNEP-Live


To create and share knowledge for environmental assessment




## A Partnership in Progress

Presentation to the Data Working Group: Sustainable Development Indicators  
LAS, Cairo 11-13 November 2012

• A PRESENTATION TO THE EYE ON EARTH SPECIAL INITIATIVES JOINT SECRETARIAT •



# UNEP-Live



UNEP-Live will provide an overarching framework for:

- ✓ Easy access to environmental assessment reports, indicators, maps and images
- ✓ Dynamic state of environment reporting using all media, including connection technologies (web, mobile devices, social media etc.)
- ✓ Networking and capacity building for data sharing – “My Country”

• A PRESENTATION TO THE EYE ON EARTH SPECIAL INITIATIVES JOINT SECRETARIAT •





Title


Body text

UNEP-Live is a web-based platform to promote access to and use of environmental information for keeping the State of Environment under review.

• A PRESENTATION TO THE EYE ON EARTH SPECIAL INITIATIVES JOINT SECRETARIAT •




## What else for UNEP?




An open and accessible web platform providing access to services and products that:

- Facilitate stakeholders' access to UNEP assessments and their underlying scientific sources
- Help make UNEP's and Government Stakeholders' environmental assessment processes more efficient, and their products of greater relevance in policy forums
- Enable flexible, customized delivery of assessment products to Member States and UNEP's major stakeholders

• A PRESENTATION TO THE EYE ON EARTH SPECIAL INITIATIVES JOINT SECRETARIAT •



## UNEP-Live GC/GMEF mandate



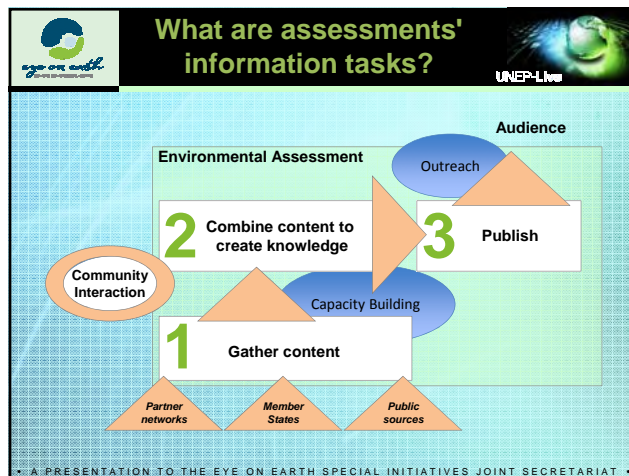
### Trajectory


- UNEP GC Decisions 25/2 and 26/2 brought us through the prototyping phase to presenting a costed submission to GC-27 next February
- The Future We Want* – para 274 further justifies solutions like UNEP-Live
 

We . . .


  - note the relevance of global mapping and recognize the efforts in developing global environmental observing systems, including by the Eye on Earth network and through the Global Earth Observation System of Systems
  - recognize the need to support developing countries in their efforts to collect environmental data.

• A PRESENTATION TO THE EYE ON EARTH SPECIAL INITIATIVES JOINT SECRETARIAT •





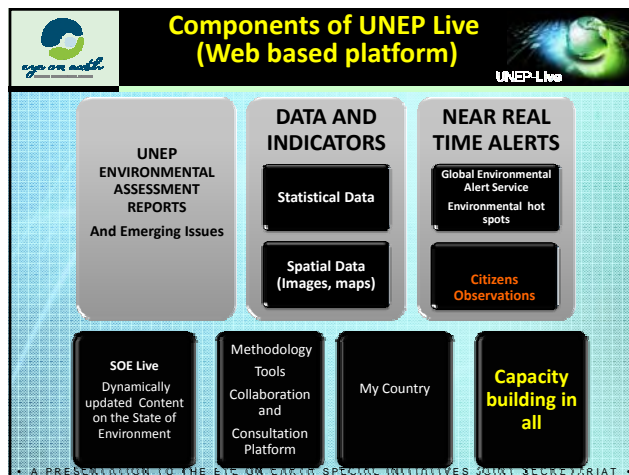
## What is the current friction?



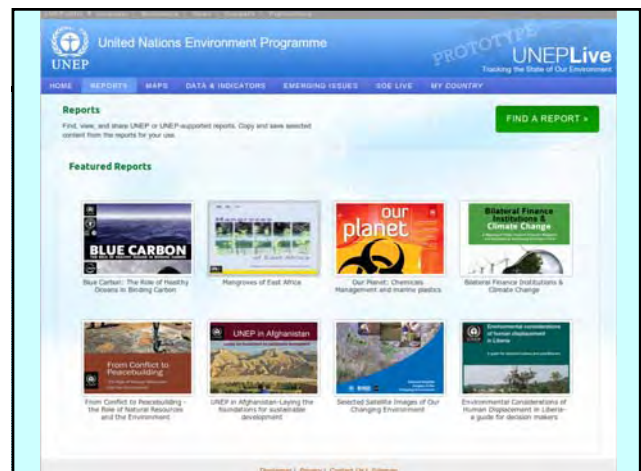
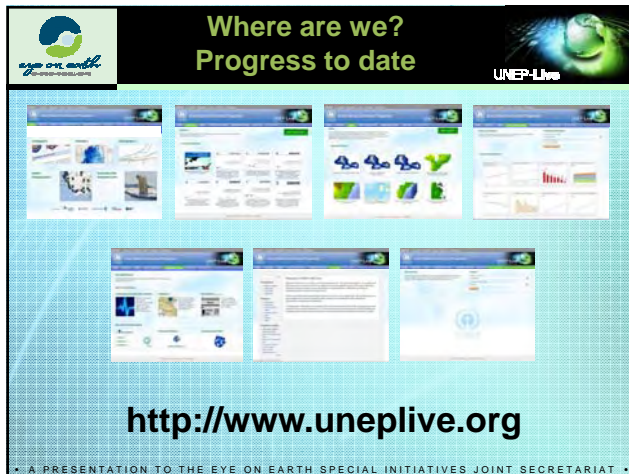
### Assessment processes constrained by:

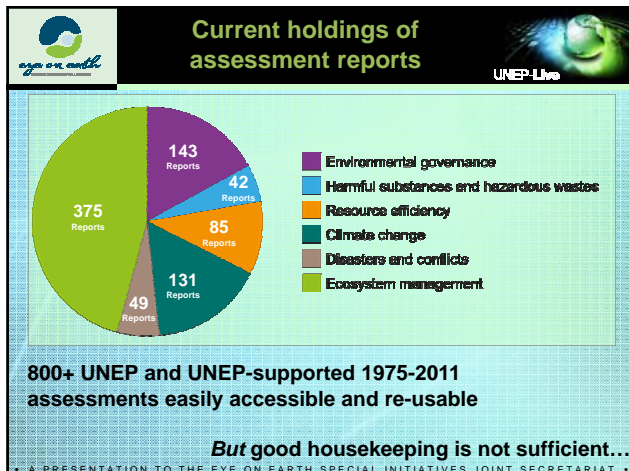
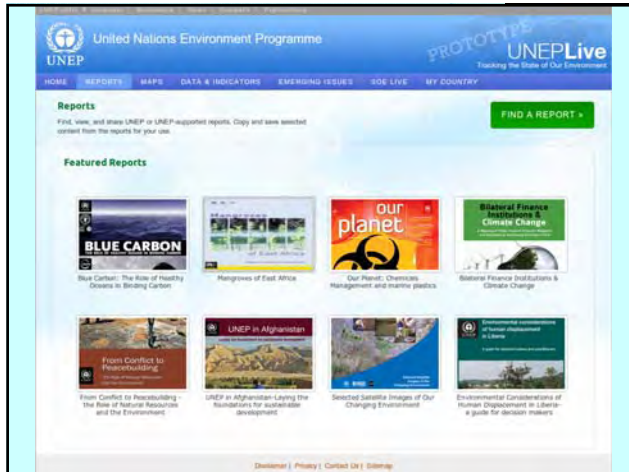
- Incomplete data (esp. national level)
- Ability or right to access to data and information
- No long-term trend data
- Capacity of experts to access, analyze and interpret
- Analyzing content to aid interpretation and creation of knowledge
- Customizing products to specific audiences
- (more to come)

• A PRESENTATION TO THE EYE ON EARTH SPECIAL INITIATIVES JOINT SECRETARIAT •



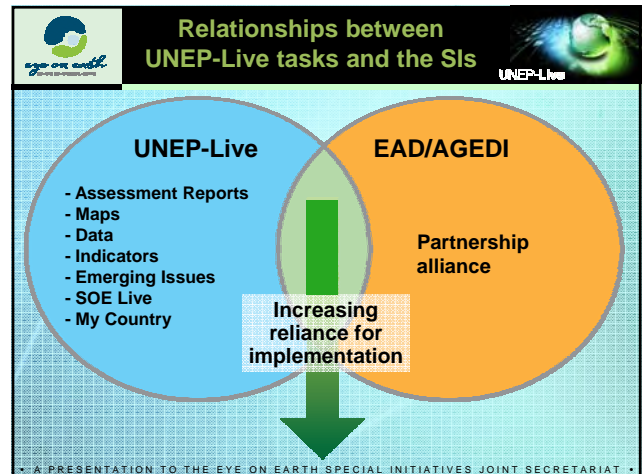















## Risks and opportunities




Risks	Opportunities
QC deficiencies and threat to credibility	Stronger partner engagement to ensure QA/QC <i>Increased end-user trust in UNEP products</i>
Non-predictable funding	Joint fund-raising and complementarity
Partners' own agendas lead to lop-sided development	Partners' programmes – leveraging their learning and best practices
Technology shifts	Openings for incremental development Increase capabilities through partners' developments

• A PRESENTATION TO THE EYE ON EARTH SPECIAL INITIATIVES JOINT SECRETARIAT •



## How to build UNEP-Live



- Develop incrementally
- Use normal funding envelopes to cover costs
- Consult
- Leverage partners' technologies and expertise
- Develop design concept
- Prototype
- Build national capacity

• A PRESENTATION TO THE EYE ON EARTH SPECIAL INITIATIVES JOINT SECRETARIAT •



## Next steps



- Informal expert meeting Copenhagen 12-13 Nov.
- DEWA will present a business plan for SMT consideration at end of November
- Draft decision on UNEP-Live goes to GC/27 February 2013


• A PRESENTATION TO THE EYE ON EARTH SPECIAL INITIATIVES JOINT SECRETARIAT •




# www.uneplive.org

• A PRESENTATION TO THE EYE ON EARTH SPECIAL INITIATIVES JOINT SECRETARIAT •





## The Future we want

UN system publishes thousands of reports every year **UNEP-Live**


- UNEP alone published about 70 reports in 2011 (@100 pages per report) = 7,000 pages
- The only innovation in last decade : move from PRINTED copies to PDFs
- Need for disruptive innovative technologies

**Transformative Change:**


	PRINT	PDF	INTERACTIVE HTML (Think of WIKI)
Process	Ex. Slow	Still slow	Timely
Nature	Static	Static	Dynamic
Reach	Inaccessible	Better accessibility	Excellent accessibility
Credibility	Expert-based	Expert-based	Evidence-based
Cost	V. Expensive	V. Expensive	V. Cost Effective

**Principle : Reuse, update, add new materials**

• A PRESENTATION TO THE EYE ON EARTH SPECIAL INITIATIVES JOINT SECRETARIAT •




## UNEP published several reports in 2011



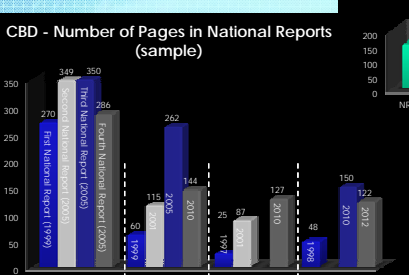
UNEP can build upon these and other publications, update existing materials and add new topics in a cost-effective manner through the state-of-the-art and dynamic system

• A PRESENTATION TO THE EYE ON EARTH SPECIAL INITIATIVES JOINT SECRETARIAT •



## Reducing reporting from MEAs?

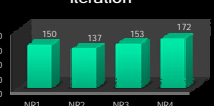
Assume an average of 50 pages per National Report.  
3 Conventions x 100 countries x 50 pgs each = 15,000 pages  
How to Track progress over time for compliance purposes?



**CBD - Number of Pages in National Reports (sample)**


Country	First National Report (1999)	Second National Report (2005)	Third National Report (2009)	Fourth National Report (2010)
Brazil	270	349	350	286
India	40	115	200	262
Fiji	25	198	87	127
Seychelles	48	198	150	122

**CBD: Number of countries who submitted National Reports (NR) by each iteration**



Iteration	Number of Countries
NR1	150
NR2	137
NR3	153
NR4	172

• A PRESENTATION TO THE EYE ON EARTH SPECIAL INITIATIVES JOINT SECRETARIAT •




## Use of Collaborative workspace

**UNEP-Live**

Creating a report with all contributors "on the same page" requires a great deal of communication.

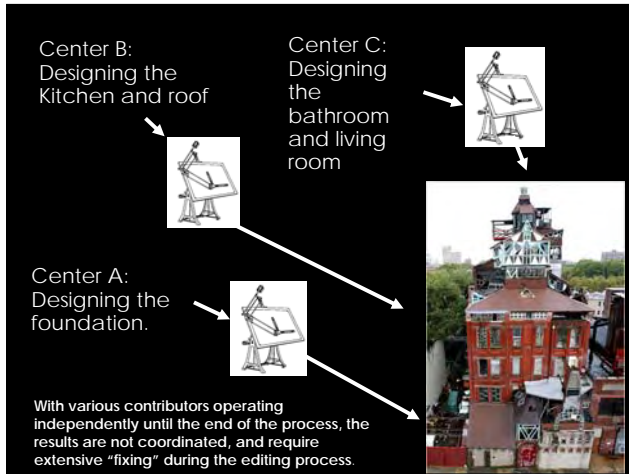
The surest (and oldest) way to do this is to put everybody in the same physical space – e.g. Fly all contributors to endless, slow and expensive meetings.

The alternative is to use the internet to create a virtual shared workspace



• A PRESENTATION TO THE EYE ON EARTH SPECIAL INITIATIVES JOINT SECRETARIAT •





**State of Environment - Live: an example**  **UNEP-Live**

The 20<sup>th</sup> century GEO Products



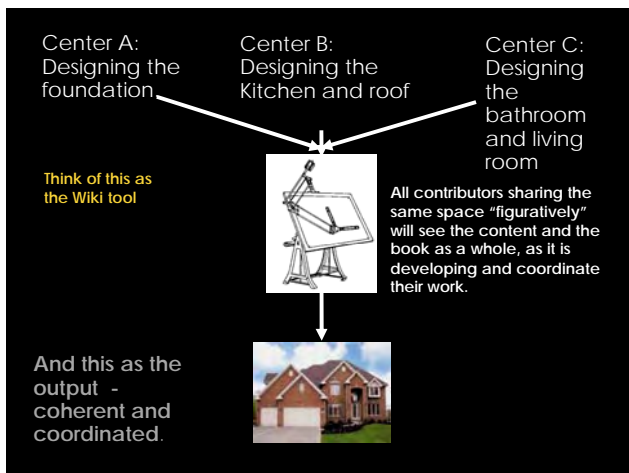
Expert based , Static, Inaccessible, Expensive


The 21<sup>st</sup> century GEO Process??


Print – PDF – Interactive HTML based

Evidence based, Dynamic, Accessible, Cheaper

• A PRESENTATION TO THE EYE ON EARTH SPECIAL INITIATIVES JOINT SECRETARIAT •



**SoE process: a future**  **UNEP-Live**

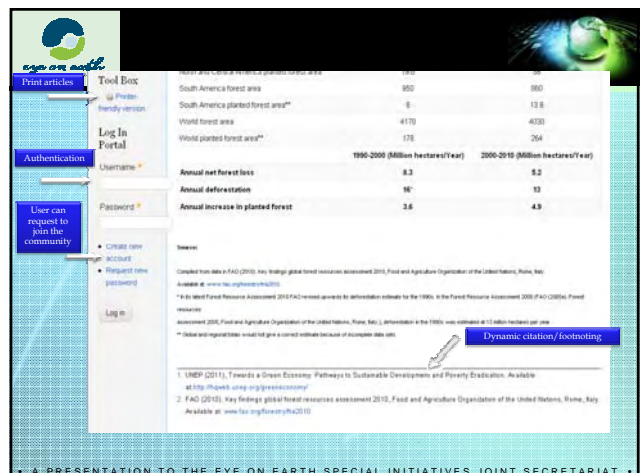


UNEP reengineers its business process by fostering online consultation and collaboration

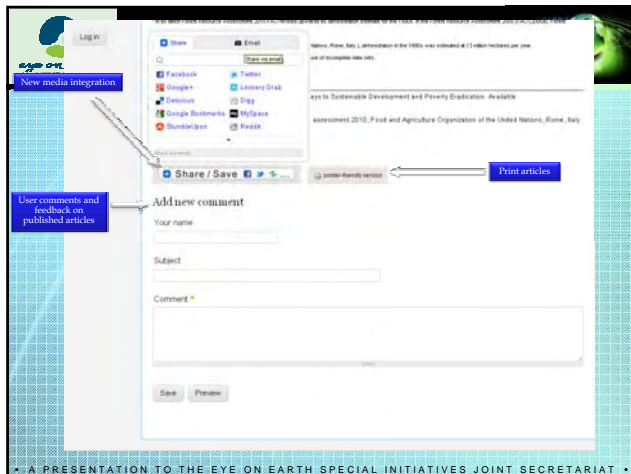
UNEP provides oversight and quality control

and .....

• A PRESENTATION TO THE EYE ON EARTH SPECIAL INITIATIVES JOINT SECRETARIAT •







Understanding SOE Live	
What is SOE Live?	
Web 2.0 wiki platform	Only authorized persons/centres can create, edit and share information; separate space for citizen contributions.
A knowledge platform	All environment-related issues.
A working platform	For UNEP to organize update and collaborate on tasks more efficiently.
What SOE Live is not:	
A normal web page	Where users can only consume information but cannot contribute to its content – contribution is key
A substitute for multi-stakeholder, consultative, peer reviewed processes	Rather it facilitates those processes and enables them to proceed more continuously and with more frequent interaction
An open 'wikipedia'	But rather a comprehensive source of moderated, peer-reviewed and regularly updated materials on the state of environment.

### Proof of Concept: SOELive/GEOLive

**Survey Reports Latest Honey Bee Losses**  
By Kim Kaplan  
**May 19, 2008** WASHINGTON--Honey bee colony losses nationwide were approximately **29 percent** from all causes from September 2008 to April 2009, according to a survey conducted by the Apiary Inspectors of America (AIA) and the U.S. Department of Agriculture.

This is **less** than the overall losses of about **36 percent** from 2007 to 2008, and about **32 percent** from 2006 to 2007, that have been reported in similar surveys.

<http://www.ars.usda.gov/ls/pr/2009/09/0513.htm>

**Survey Reports Latest Honey Bee Losses**  
By Kim Kaplan  
**April 29, 2010** Losses of managed honey bee colonies nationwide totaled **33.8 percent** from all causes from October 2009 to April 2010, according to a survey conducted by the Apiary Inspectors of America (AIA) and the Agricultural Research Service (ARS)....

This is an **increase** from overall losses of **29 percent** reported from a similar survey covering the winter of 2008-2009, and similar to the **35.8 percent** losses for the winter of 2007-2008.

<http://www.ars.usda.gov/ls/pr/2010/10042/9/2.htm>

**Survey Reports Latest Honey Bee Losses**  
By Kim Kaplan  
**May 23, 2011** WASHINGTON — Total losses from managed honey bee colonies nationwide were **30 percent** from all causes for the 2010/2011 winter, according to the annual survey conducted by the U.S. Department of Agriculture (USDA) and the Apiary Inspectors of America (AIA).


This is roughly **similar** to total losses reported in similar surveys done in the four previous years: **34 percent** for the 2009/2010 winter, **29 percent** for 2008/2009; **36 percent** for 2007/2008, and **32 percent** for 2006/2007.


<http://www.ars.usda.gov/ls/pr/2011/110/523.htm>

### SOER-Live Capacity Development in West Asia

- National State of Environment reporting toolkit
- Software, training and on-going support
- SOEs for 4-6 Gulf-region countries by 2014
- Deployable system operated by national authorities
- Targets national reporting needs
  - Data and information collection and management
  - Reduced duplication and improve consistency

Funded by EAD/AGED  
Software development by UNEP-WCMC



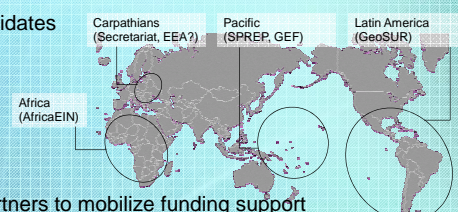
**SOER-Live Capacity  
Development – Global**


SOER-Live toolkit complements UNEP-Live

Re-use content in:  
"Reports", "Data and Indicators", "My Country", "Maps"

Future adaptation for re-use in other countries and regions

Potential candidates  
(and partners)



Carpathians  
(Secretariat, EEA?)

Pacific  
(SPREP, GEF)

Latin America  
(GeoSUR)

Africa  
(AfricaEIN)

UNEP and partners to mobilize funding support

• A PRESENTATION TO THE EYE ON EARTH SPECIAL INITIATIVES JOINT SECRETARIAT •

*Thank you*

[www.uneplive.org](http://www.uneplive.org)